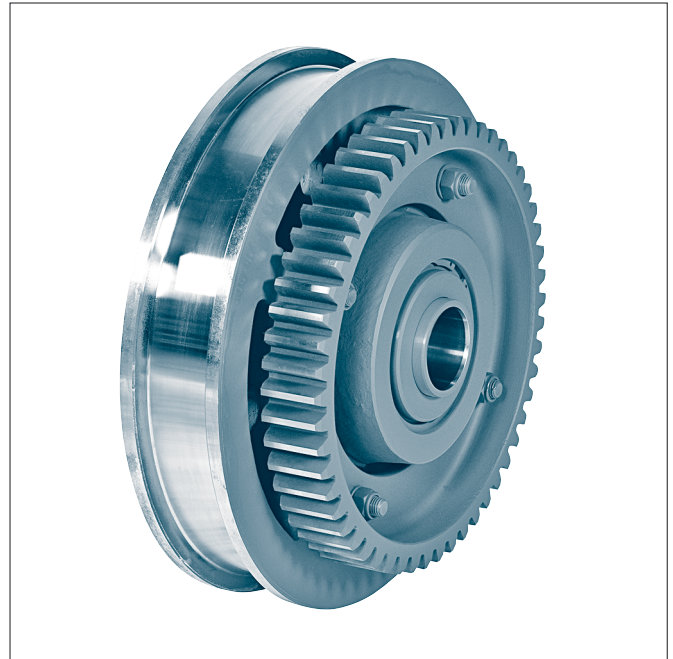


Form B2 symmetrical hub, covers with radial shaft seal ring, nominal- \varnothing $d_1 \leq 500$ mm



Form B2 symmetrical hub, covers with radial shaft seal ring, nominal- \varnothing $d_1 \geq 630$ mm

Designation of a crane wheel form B2 with nominal- \varnothing $d_1 = 630$ mm, gauge $b_2 = 100$ mm, incl. self aligning roller bearings 222 24, covers with radial shaft seal ring, with large gearing (Zentrier- \varnothing $d_5 = 530$ and number of teeth 62):

Crane wheel B2 – 630 × 100 – 530 × 62 TGL 34 965

- Form A1** unsymmetrical hub, covers with gap sealing
- Form A2** unsymmetrical hub, covers with radial shaft seal ring
- Form B1** symmetrical hub, covers with gap sealing
- Form B2** symmetrical hub, covers with radial shaft seal ring

The rolling bearings are lubricated.

Without certain agreement crane wheels with $\varnothing d_1 \geq 320$ mm internal bushing with lubrication bore and covers with radial shaft seal ring.

Material:

Wheel body- \varnothing 200 – 250 C45

Wheel body- \varnothing 320 – 1000 GE420 (GS-70) or G42CrMo4+QT (GS-42CrMo4V)

Internal bush S355 (St 52)

Gear ring C45 or GE300 (GS-60)

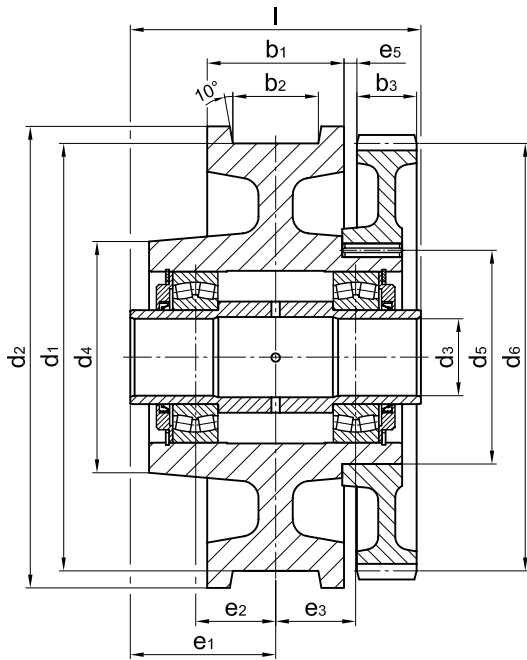
Other material and dimensions as well as axles on request.

Gear rings see TGL 34 966

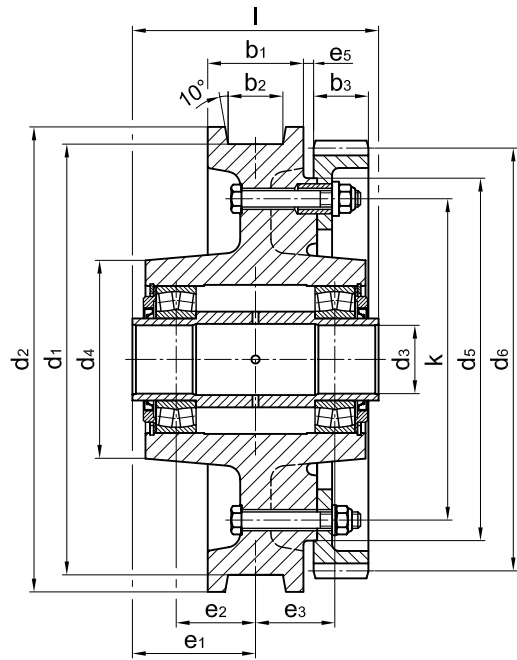
Crane wheels without gear ring see TGL 34 964.

Crane wheels for axle with gear ring

TGL 34965



Form B2 symmetrical hub, covers with radial shaft seal ring, nominal- \varnothing d1 \leq 500 mm



Form B2 symmetrical hub, covers with radial shaft seal ring, nominal- \varnothing d1 \geq 630 mm

form	d1	b2 ¹⁾	b1	d2	d3	d4	d5	gear ring ²⁾				e1	e2	e3	e5	k	l -0,5	bearings	unit weight
	h9				D10		Toleranzfeld	b3	d6	m	z								≈[kg]
200		40-75	105																
250		40-80	110																
320		40-80	110																
400		40-90	125																
		90-100	140																
500		40-90	125																
		100-120	160																
630		60-90	140																
		100-120	180																
710		60-90	140																
		100-130	180																
800		80-110	160																
		120-130	200																
1000		100-150	210																

Dimensions on request

1) The dimension of the gauge recess b2 to be stated with order.
 2) Tooth form acc. to DIN 867 without appending modification. Pressure angle 20 degree.