

Crane wheels

for driven and nondriven wheel sets acc. to TGL 34968

TGL 34968



Crane wheel body A 630 × 90
(narrow type)



Crane wheel body A 630 × 110
(broad type)

Designation of a wheel with nominal- \varnothing d1 = 400 mm,
gauge b2 = 80 mm, bores- \varnothing d3 = 105 H7,
with feather keyway acc. to DIN 6885-1:

Crane wheel body A 400 × 80 × 105 H7 TGL 34968

Form A with feather keyway acc. to DIN 6885-1

Form B without feather keyway

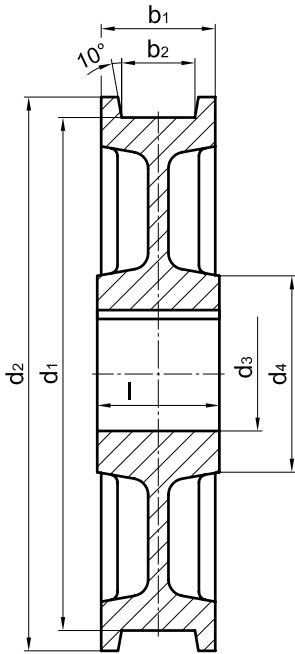
Material: GE420 (GS-70) or
G42CrMo4+QT (GS-42CrMo4V)

Other material and dimensions on request.

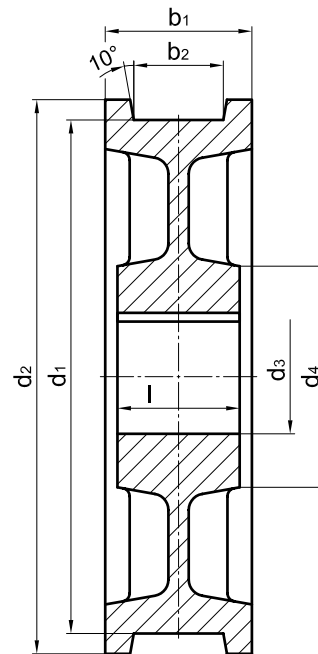
Crane wheels

for driven and nondriven wheel sets acc. to TGL 34968

TGL 34968



Crane wheel body A 630 × 90
(narrow type)



Crane wheel body A 630 × 110
(broad type)

form	nominal-Ø d1 h9	b2 ¹⁾	b1	d2	d3 H7	d4	l +0,2	unit weight ≈[kg]
A; B	320	40-70	100	Dimensions on request				
		80-90	130					
A; B	400	50-80	120					
		90-120	160					
A; B	500	50-80	120					
		90-120	160					
A; B	630	60-90	140					
		100-130	180					
A; B	710	60-80	140					
		90-130	180					
A; B	800	80-90	160					
		100-130	200					
A; B	900	90-110	190					
		120-150	210					

1) The dimension of the gauge recess b2 to be stated with order.