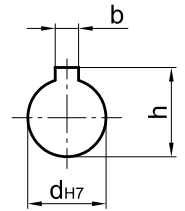
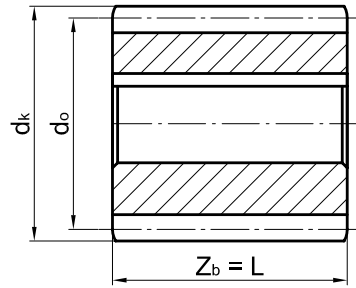
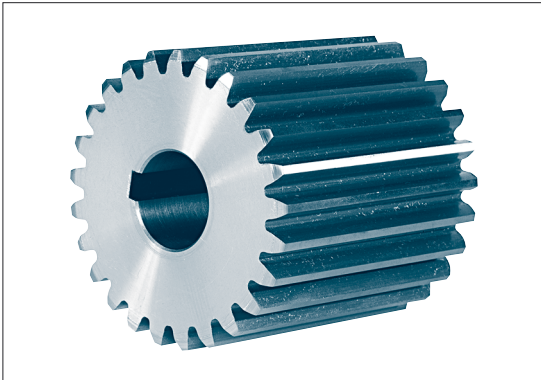


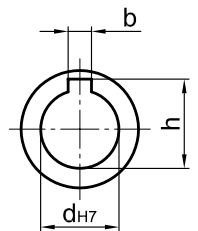
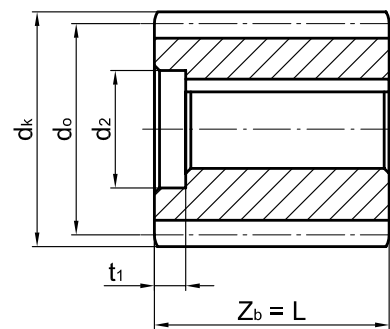
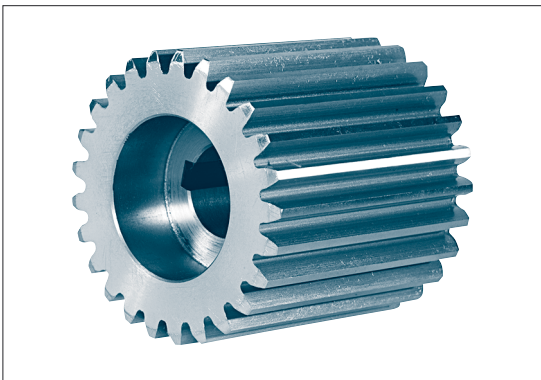
Pinions

KG 010.5

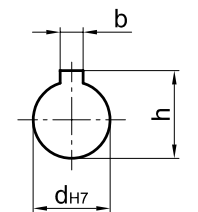
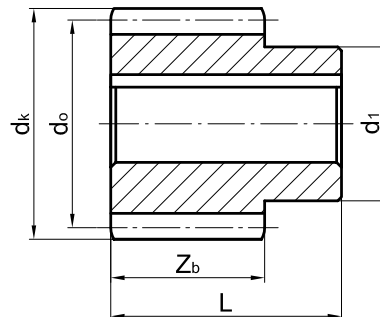
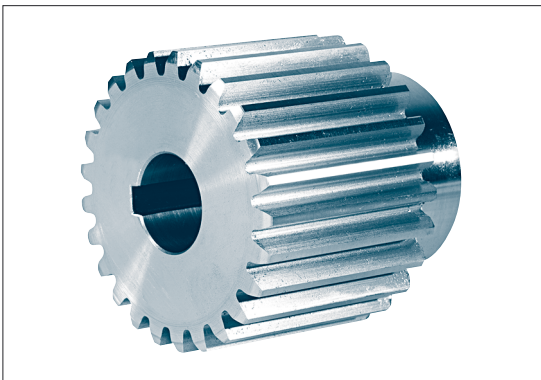
Form 1



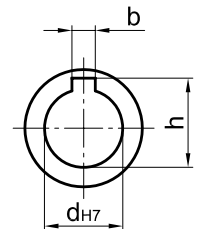
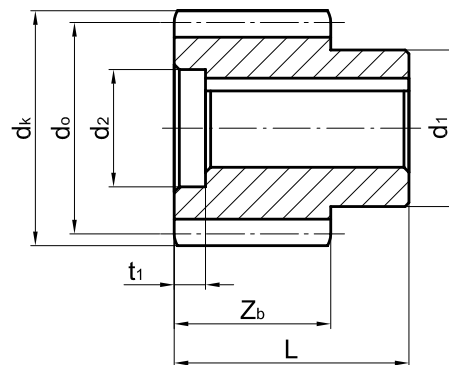
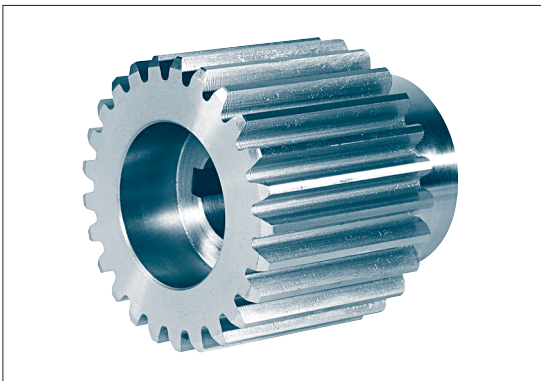
Form 2



Form 3



Form 4



Designation of a pinion form 1, module 3, number of teeth 18, length $L = 60$ mm, bore- $\varnothing d = 20$ H7 with feather keyway according to DIN 6885-1:

Pinions 3 × 18 × 60 × 20 H7 KG 10.5 form 1

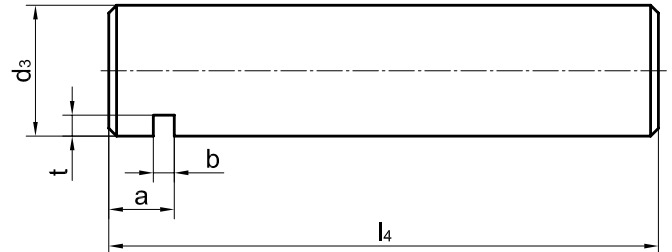
Module: 2-15
Minimum number of teeth: 12
 $d_{\min} =$ 16 H7
Material: C45 or 42CrMo4+QT

All dimensions and material to be stated with order.

Wheel axle without lubrication bore

fitting to travel wheels according to KG 014

KG 010.6



Designation of an axle for travel wheel - $\varnothing d1 = 300$ mm,
axle - $\varnothing d3 = 50$ mm, length 210 mm:

Axle 50 × 210 KG 010.6

Material: 42CrMo4+QT or C45

Other material and dimensions on request.

for wheel - \varnothing d1	d3 f7	l4	a	b +0,5	t +0,5	unit weight ≈[kg]
200	40	190	25	8	7	1,8
250 300	50	210	25	8	8	3,1
315	55	265	25	8	9	4,8
400	60	265	25	8	9	5,7