

Crane wheels for rotating shafts

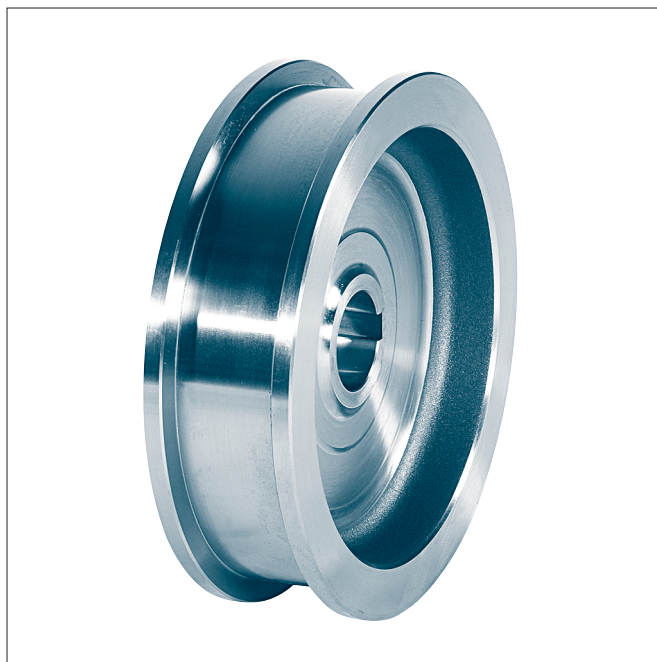
with feather keyway according to DIN 6885-1

suitable for older types of the trolley traveling winches Demag brand

KG 013



Form A with gear ring



Form B without gear ring

Designation of a travel wheel form A with gear ring,
nominal- \varnothing d1 = 200 mm,
gauge b1 = 55 mm, bore- \varnothing d2 = 45 mm H7,
module 4 and number of teeth 58:

Crane wheel A 200 × 55 × 45 H7 – 4 × 58 KG 013

Form A with gear ring

Form B without gear ring

Material: C45

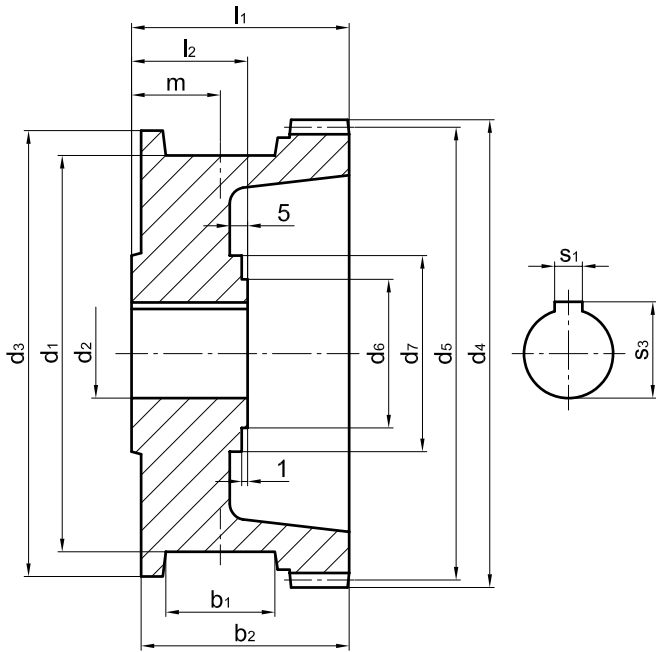
Other material and dimensions on request.

Crane wheels for rotating shafts

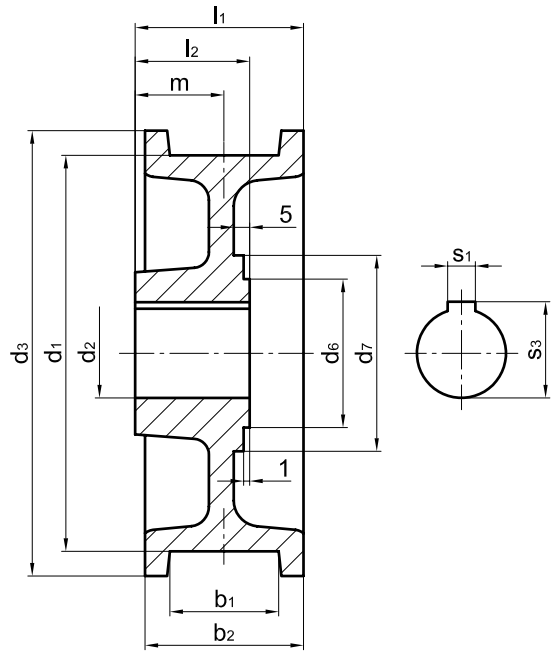
KG 013

with feather keyway according to DIN 6885-1

suitable for older types of the trolley traveling winches Demag brand



Form A with gear ring



Form B without gear ring

wheel- Ø d1	b1		b2		d2	d3	d6	d7	l1		l2	m	s1	s3	gear ring ¹⁾ (form A)				unit weight ≈[kg]		Demag spare no.		
	form A	form B	form A	form B					form A	form B					mo- dule	no. of teeth	d4	d5	form A	form B	form A	form B	
h11					H7																		
200	55	105	80		45										4	58						598 456 44	598 458 44
					60																	598 344 44	598 346 44
250	55	105	80		50										4	71						598 856 44	598 858 44
					65																	598 876 44	598 878 44

1) Gearing corrected, addendum modification coefficient $x = -0,5$.
Pressure angle 20 degree.