

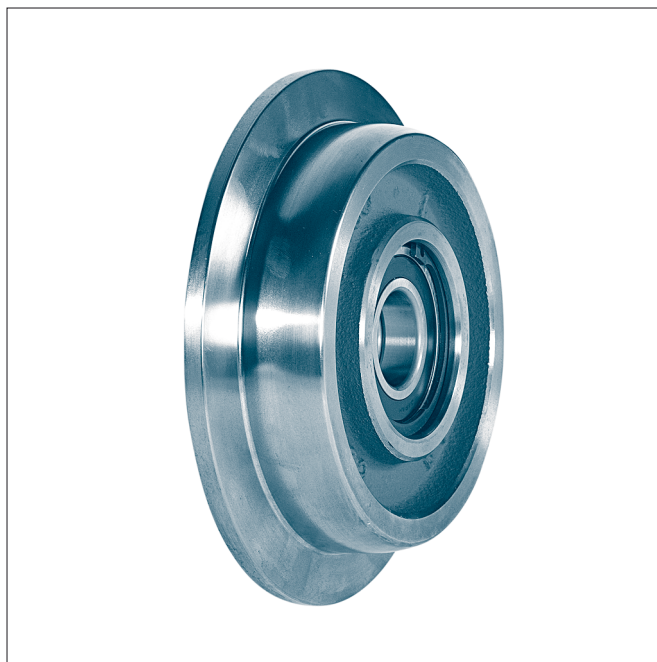
Crane wheels with single wheel flange

for I- and IPE girder (DIN 1025)

KG 020



Form A with gear ring



Form B without gear ring

Designation of a wheel with single wheel flange, form A with gear ring, nominal- \varnothing d1 = 300 mm, complete with anti friction bearings:

Crane wheel A 300 KG 020

Form A with gear ring

Form B without gear ring

The running surface width b1 is one half each cylindric/spheric.

The rolling bearings are lubricated for life.

Material:

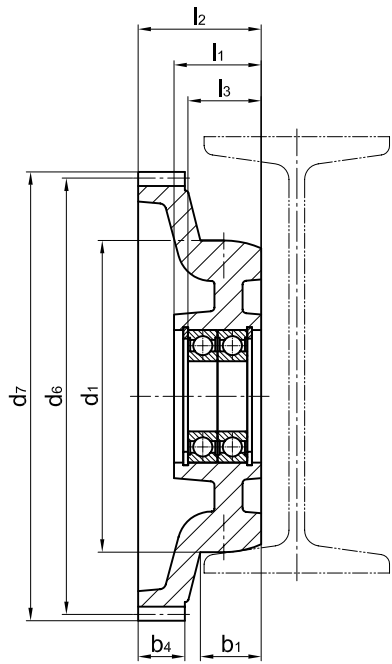
Wheel body EN-GJS-600-3 (GGG-60)

Other materials and dimensions on request.

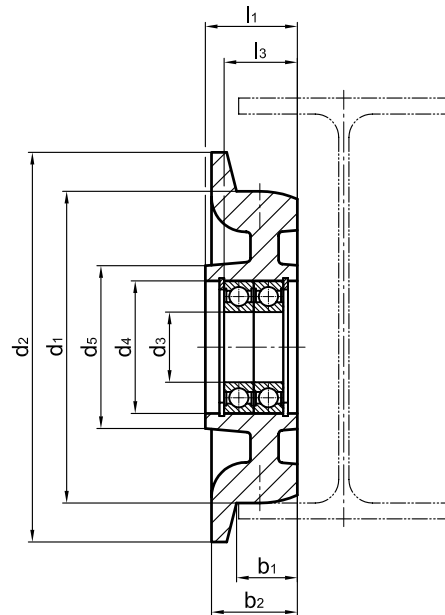
Crane wheels with single wheel flange

for I-girder from I-and IPE-series according to DIN 1025

KG 020



Form A with gear ring



Form B without gear ring

wheel-Ø d1	b1	b2	b4	d2	d3	d4	d5	l1	l2	l3	rolling bearingsr	gear ring ¹⁾ (form A)				unit weight ≈[kg]		wheel load [kg] ²⁾
												mo- dule	no. of teeth	d6	d7	Form A	Form B	
h11						M7												
130	26	38	25	160	30	62	80	46	58	39	6206-2RS	3	52	156	162	3	2,5	1900
160	31,5	44	30	200	35	72	90	49	69	41,5	6207-2RS	4	53	212	220	6	5	2500
200	39	55	30	250	45	85	105	56	79	47	6209-2RS	4	70	280	288	13,5	9,5	3300
300	56	73	30	340	65	120	150	73	100	59,5	6213-2RS	4	100	400	408	37	28	5500

- 1) Module and number of teeth to be stated with order.
Tooth form according to DIN 867 without profile correction.
Pressure angle 20 degree.
- 2) The wheel loads stated are valid for $v \approx 10$ m/min with an endurance of approximately 3600 hours.