

THE WORLD OF CRANE COMPONENTS



# TITAN

## WHEEL SET

KG 130 SERIES

 ALWAYS SAFE. ALWAYS THE FIRST CHOICE.





**TITAN**  
WHEEL SET SERIES KG 130

# TITAN

**ALWAYS SAFE. ALWAYS THE FIRST CHOICE.**

## KARL GEORG WHEEL SETS move the WORLD

Crane system; roof construction or stadium turf; Ice cold or highly explosive;  
Fast or slow; Cleanroom or extremely harsh environment!

### WHEEL SET SYSTEM TITAN

Optimally graduated sizes in a modular system, compact dimensions, crane wheels from Ø160mm to Ø630mm, fast and economical, ready to install, with a load range of up to 60t.

All components and interfaces are perfectly coordinated.

#### DISCOVER THE STRONG SOLUTION FOR YOUR BUSINESS:

Our well-proven wheel set system **TITAN** - for crane engineering, industry, mechanical engineering and plant construction. With the modular, easy-to-maintain and robust design that always fits, we ensure safe and durable movements of heavy loads with the simplest assembly and the longest service life.

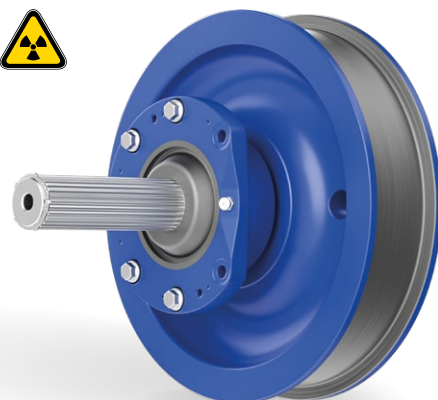
#### WE GUARANTEE NO COMPROMISES

Our innovative wheel set system offers you the highest flexibility and maximum benefit for your plant. Our dynamically heavy-duty components are available in many installation variants: pre-assembled or in individual parts, with and without flange bearings for installation in hollow sections or box girders. In the "corner bearing" design, installation and removal of the wheel sets is particularly fast and uncomplicated.

All wheel sets are equipped with robust, above-average long-life and lifetime-lubricated brand spherical roller bearings that meet the requirements of the temperature range from -30°C to +200°C. The option of relubrication is already available for all designs and sizes.

#### ALLOW YOURSELF FREEDOM AND DECIDE FOR YOURSELF:

For the driven wheelset as an individual or central drive, off-set and angular geared motors are available from the kits of all manufacturers. With us, you determine your drive and are free to choose the drive manufacturer. Enjoy maximum flexibility and freedom with our innovative drive solutions.





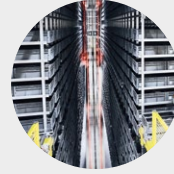
## AUTOMOTIVE

Automotive engineering, autonomous driving and subcontracting



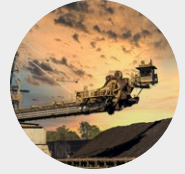
## ENERGY SECTOR

Wind power, solar power, hydropower, geothermal power and biomass



## PLANT ENGINEERING

Process engineering, power engineering, supply engineering and production engineering, etc.



## MINING

Exploration, extraction and movement of mineral resources



## ENTERTAINMENT

Commercial roofs, stage technology, stadium turf etc.



## CONVEYOR SYSTEMS

Upstream/downstream, onshore/offshore production, LNG/H<sup>2</sup> transport



## SMELTING WORKS

Steel production, metal production and processing



## CRANE ENGINEERING

Industrial cranes, process cranes, container handling

## AT A GLANCE



-30 °C TO +90 °C  
(+200 °C MAX.)



UPTO  
60 TONS



HIGH  
AVAILABILITY



SIMPLE  
INSTALLATION



FLEXIBLE DRIVE  
SELECTION

## WE HOLD FIRM AND REMAIN FLEXIBLE

All external dimensions and interfaces to the steel structure, including the fastening elements, are compatible with similar competitive designs.

## WE SAY „YES“!

From project planning to commissioning, we at Karl Georg are at your side as needed. We are happy to advise and support you and also offer our wheelsets in exchange for competitor products. We are happy to recommend the economically and technically "best solution" for you and deliver quickly and reliably.

## WE MANUFACTURE WITH SOLAR ENERGY FROM OUR OWN PRODUCTION.

With a total output of around 850 kWp, we are not just generating enough energy for our electric vehicle fleet, but also significantly reducing the CO<sup>2</sup> emissions of our production.



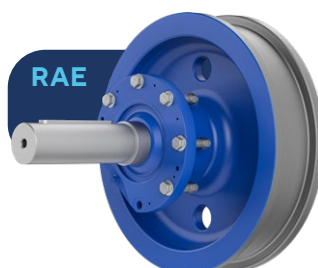


# WHEEL SET SYSTEM TITAN

Installation variants, running surfaces and grooves

RAE / RNE Nominal size and crane wheel Ø d1	Maximal wheel load	Wheel width b2	Wheel tread b1	Crane wheel Ø d1 h9	Outer Ø d2	L5	L6	f2	L12	L8	Ø DFI	Ø DS	Ø DB f8	L7	XY +/-
(mm)		(mm)	(mm)	(mm)	(mm)	(mm)	(mm)	(mm)	(mm)	(mm)	(mm)	(mm)	(mm)	(mm) <sup>*1</sup>	(mm)
160	8.800	100	max. 75	160	190	170	215	10-15	15	148	150	130	110	130	4,5
200	11.200	100	max. 75	200	230	170	215	10-15	15	148	150	130	110	130	4,5
250	16.000	110	max. 80	250	282	220	275	14-20	15	181	230	200	170	160	4,5
315	22.000	125	max. 90	315	350	250	306	14-20	15	211	230	200	170	180	4,5
400	28.000	125	60 - 90	400	440	280	362	15-32	28	179	280	250	210	210	10
		140	85-105												
500	40.000	140	60-100	500	540	320	402	20-32	28	224,4	280	250	210	230	10
		170	95-130												
630	60.000	170	75-130	630	680	350	463	24-35	36	280,6	370	250	268	250	12
		210	100-160												

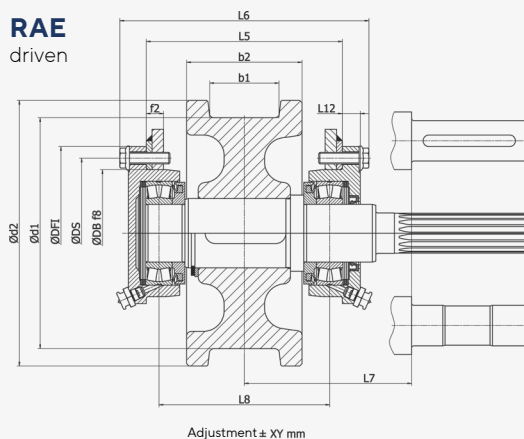
\*1 = L7, other dimensions possible



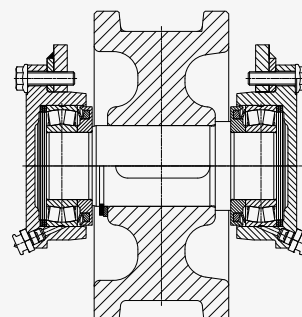
## SIZES AND DIMENSIONS

Wheel set series 160, 200, 250 and 315 for corner bearing installation complete or for box girder installation in individual parts

**RAE**  
driven

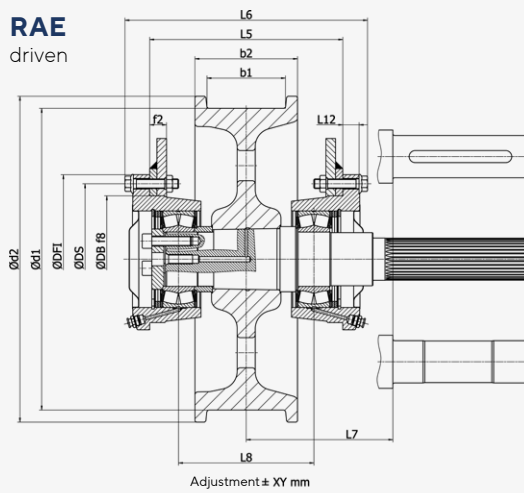


**RNE**  
non-driven

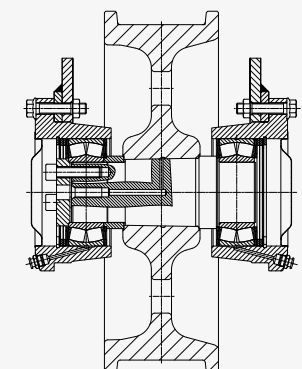


Wheel set series 400, 500 and 630 for corner bearing installation complete or for box girder in individual parts

**RAE**  
driven



**RNE**  
non-driven



### DESIGN KEY

RAE - 400 - 80 / 125 - 1 - ADK70 - W - 75

The design key for the series can be found in the current **TITAN catalog**.

Further information and technical details can be found in our **wheel set catalog** at [www.karl-georg.de](http://www.karl-georg.de).



\* all common drives possible

# WHEEL SET SYSTEM TITAN

Crane wheel material and installation sizes

## CRANE WHEEL MATERIAL:

Spheroidal graphite iron  
(EN-GJS-700-2)

## ALTERNATIVELY:

Solid material or binding

- 42CrMo4+QT
- 34CrNiMo6+QT
- Stainless Steel
- CuAl-xx (Bronze)
- Polyamide PA 12 G
- Vulkollan®



Installation variant					Wheel Set Series	Weight kg <sup>*2</sup>	
1	2	3	4	5		RAE	RNE
x		x			KG 130	21	19
x		x			KG 130	26	24
x	x	x	x		KG 130	54	52
x	x	x	x		KG 130	74	70
x	x	x	x		KG 130	115	110
x	x	x	x		KG 130	120	115
x	x	x	x	x	KG 130	165	160
x	x	x	x	x	KG 130	175	170
x	x	x	x	x	KG 130	350	340
x	x	x	x	x	KG 130	375	365

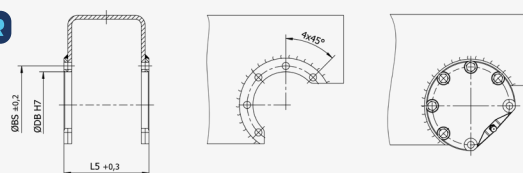
\*2 = Gewicht variiert nach Ausführung

## MAXIMUM VARIETY WITH 5 INSTALLATION VARIANTS

### VARIANTE 1

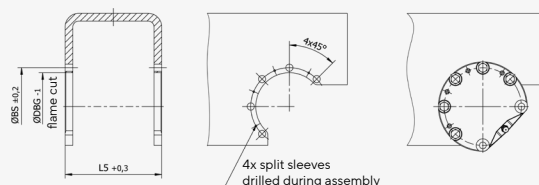
Corner bearing installation  
Flange centring  
machined

**TOPSELLER**



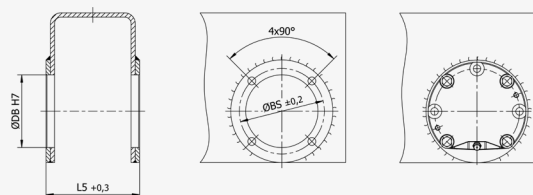
### VARIANTE 2

Corner bearing installation  
Flange centring  
flame cut



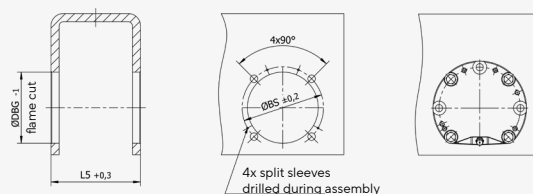
### VARIANTE 3

Closed box girder installation  
Flange centring  
machined



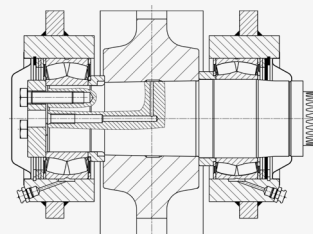
### VARIANTE 4

Closed box girder installation  
Flange centring  
flame cut



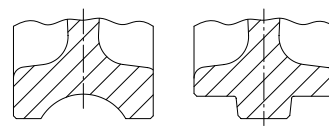
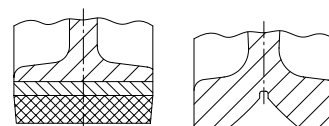
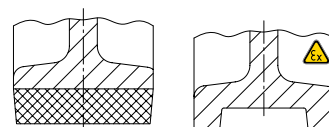
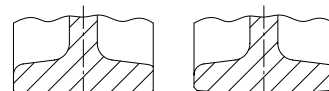
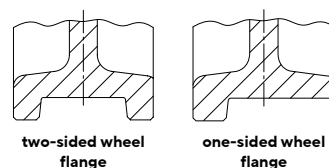
### VARIANTE 5

without flange housing  
for direct installation in  
machined steel construction



## RUNNING SURFACES AND GROOVES

Running surface geometry as required, any crane wheel geometry and groove possible, therefore design suitable for curves is also feasible.



## CERTUS – OUR GENTLE CHOICE

### FOR AN "EXTRA" BIT OF SAFETY

"Safety and efficiency" for crane applications: Innovative hydraulic buffers for industrial cranes as the solution for energy absorption.

Industrial buffers "Made in Germany" by Karl Georg offer effective solutions for energy absorption in a variety of applications, such as process cranes, port cranes, in steel plants, mining and much more.

In addition to rubber and cellular buffers, Karl Georg offers a wide range of high performance hydraulic buffers, specially designed to meet the demanding requirements of cranes and capable of absorbing more than 95% of impact energy.

Hydraulic buffers with a max. buffer force of 1,000 kN and a buffer stroke of 50 to 1,600 mm are available.

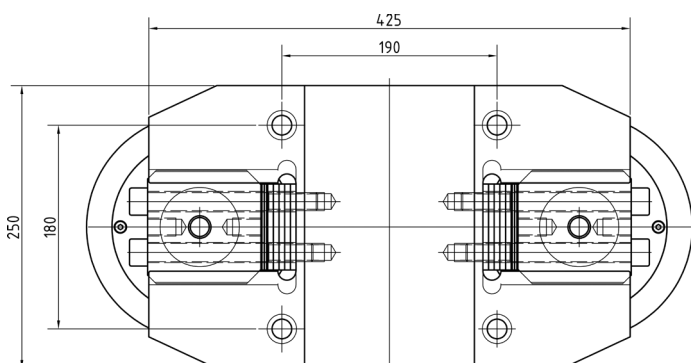
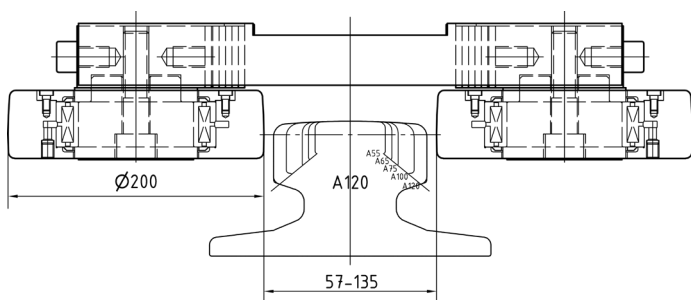
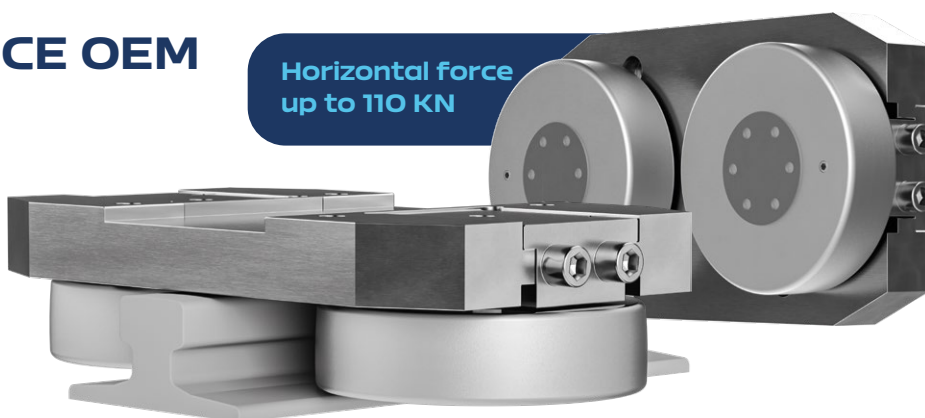
Standard for an ambient temperature -30 to +100 degrees. In slightly modified version up to -50 °C.



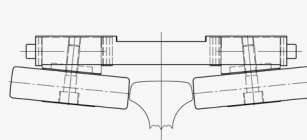
## HIGH PERFORMANCE OEM GUIDE ROLLERS

For your safe use with parallel rail head sides from stock. Options for inclined rail head sides as well as additional roller securing are a matter of course for us.

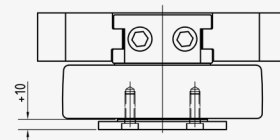
Horizontal force  
up to 110 kN



### FURTHER OPTIONS



Inclined  
Rail head side



Roller protection



# XTREM WE PUSH BOUNDRIES

Thanks to its decades of experience, Karl Georg can offer you a wide range of specific product solutions for particular applications, conditions and interfaces.

Thanks to flexible manufacturing concepts and a high level of vertical integration, we are able to offer customised solutions from a minimum order quantity of just 1 item.

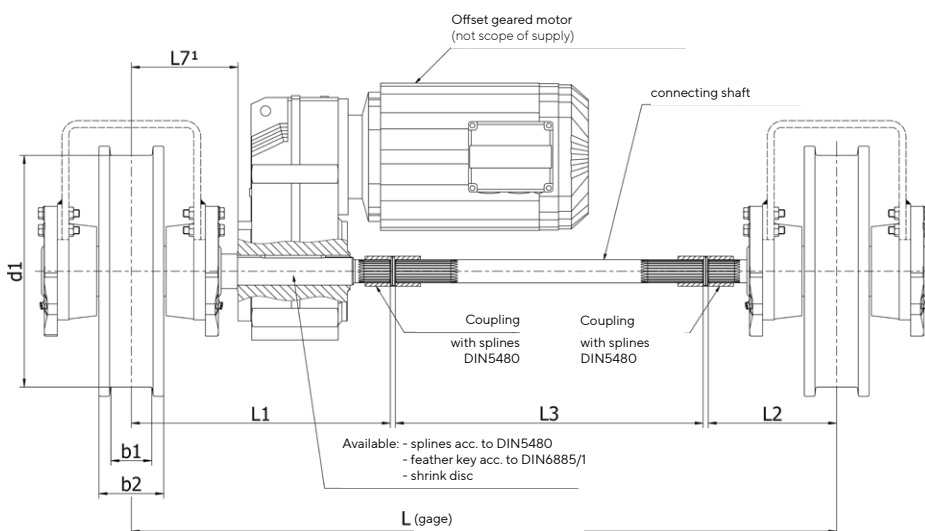
We would be happy to assist you with your project specifications.

- Steel, stainless steel, plastics
- Forged crane wheels
- Special contours and interfaces
- Running surface hardness up to 54 HRC, 20 mm deep
- Explosion-proof
- Temperature down to -30 °C
- Temperature up to +200 °C
- Indoor, outdoor, offshore
- Corrosion protection C1 – C5M



ALL STANDARD CRANE WHEEL MATERIALS, SOLID MATERIALS AND COMPOSITE SOLUTIONS.

## PERFECTLY COORDINATED ATTACHMENTS AND ACCESSORIES



**DRIVE SHAFTS SUITABLE FOR  
THE FOLLOWING TRANSMISSION  
MANUFACTURERS:**

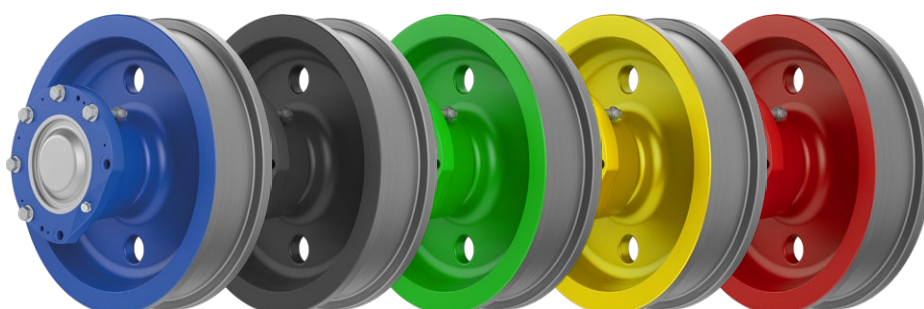
DEMAG · SEW · NORD · STEPHAN · ABB  
SIEMENS · ABM GREIFFENBERGER  
BONFIGLIOLI · KONESCO · FLENDER  
KONECRANES · STAHL CRANESYSTEMS

DRIVE SHAFTS SUITABLE FOR SLIP-ON GEAR  
MECHANISMS FROM OTHER MANUFACTURERS  
ON REQUEST.

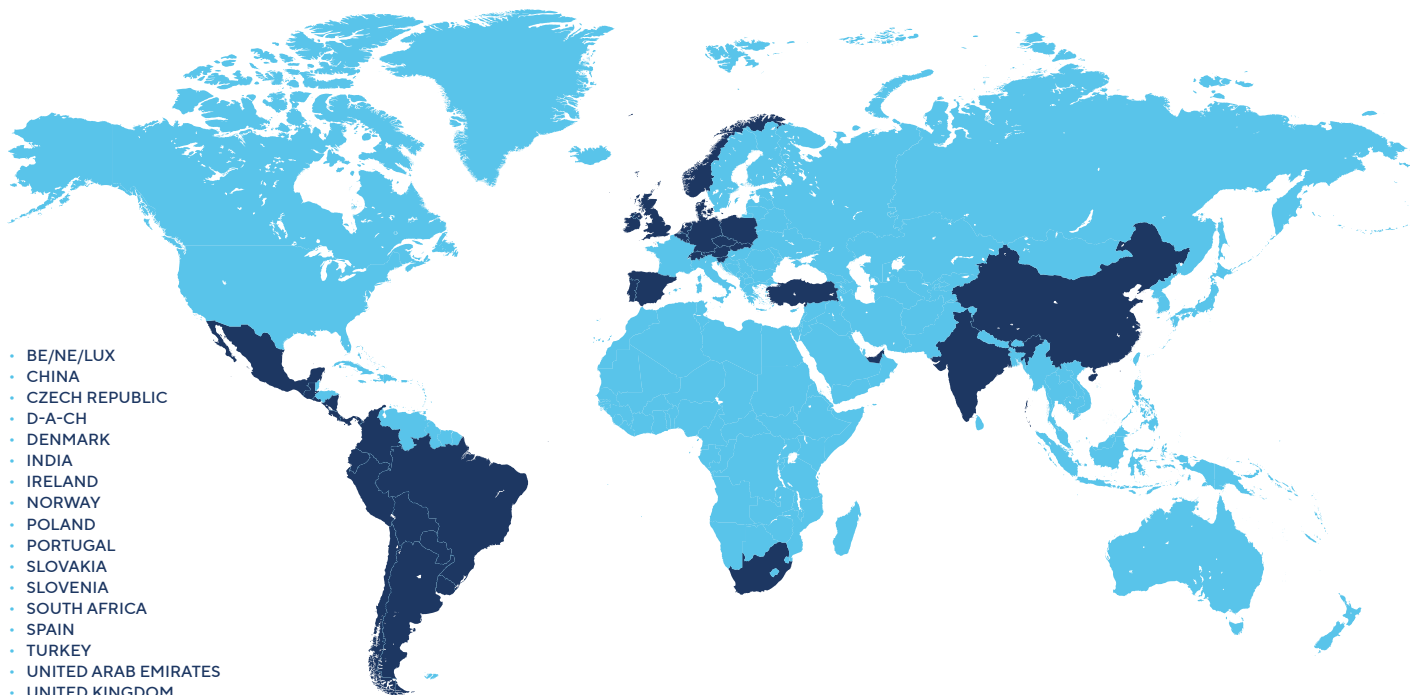
## TAILORED ACCENTS AND CORROSION PROTECTION AS NEEDED

### TALK TO US!

Flexibility and creativity are the key features of our products. Innovation is our driving force. No matter what you are planning, we can supply the right product.

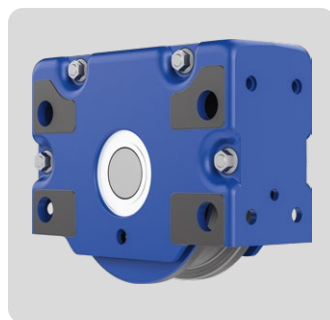






- BE/NE/LUX
- CHINA
- CZECH REPUBLIC
- D-A-CH
- DENMARK
- INDIA
- IRELAND
- NORWAY
- POLAND
- PORTUGAL
- SLOVAKIA
- SLOVENIA
- SOUTH AFRICA
- SPAIN
- TURKEY
- UNITED ARAB EMIRATES
- UNITED KINGDOM

## MORE INFORMATION



FOR MORE  
INFORMATION, PLEASE  
VISIT OUR WEBSITE  
[KARL-GEORG.DE](http://KARL-GEORG.DE)



### KARL GEORG GMBH

Karl-Georg-Straße 3  
D-57612 Ingelbach-Bahnhof  
T: +49 (0)2688 / 95 16 - 0

info@karl-georg.de  
www.karl-georg.de

WE ARE CERTIFIED  
TO DIN ISO 9001  
AND ISO 14001.



Subject to changes and errors  
© 2025 Karl Georg GmbH