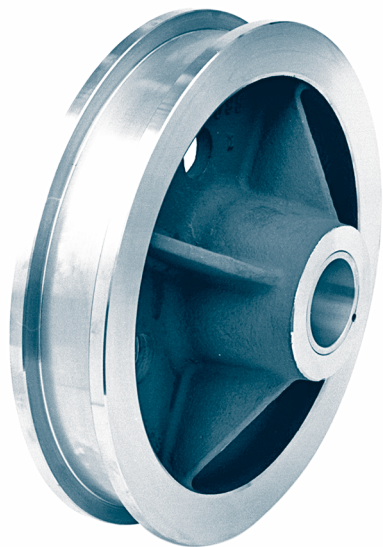


Crane wheels with slide bearing without gear ring

DIN 15 074



Designation of a crane wheel form B with nominal- \varnothing $d_1 = 630$ mm,
gauge $b_1 = 100$ mm, hub symmetric ($l_1 = l_2 = 185$ mm):

Crane wheel B 630 × 100 DIN 15 074

Form S narrow crane wheel

Form B broad crane wheel

The slide bearings are secured with setscrews towards twisting and dislocation.

Material:

Wheel body- \varnothing 200–250 C45 machined from solid

Wheel body- \varnothing 315–1250 GE420 (GS-70) or

G42CrMo4+QT (GS-42CrMo4V)

Bearings

G-CuSn7ZnPb (Rg 7)

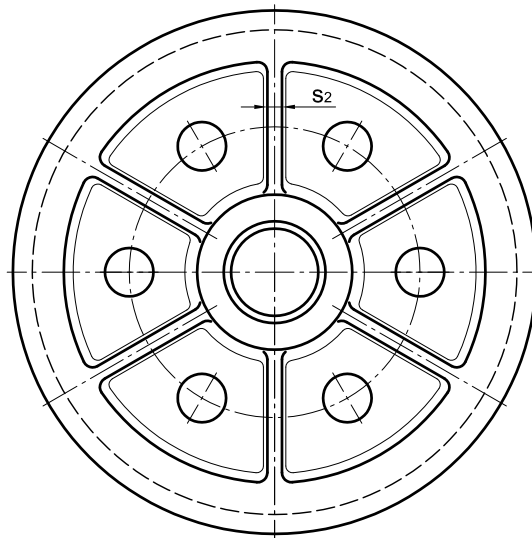
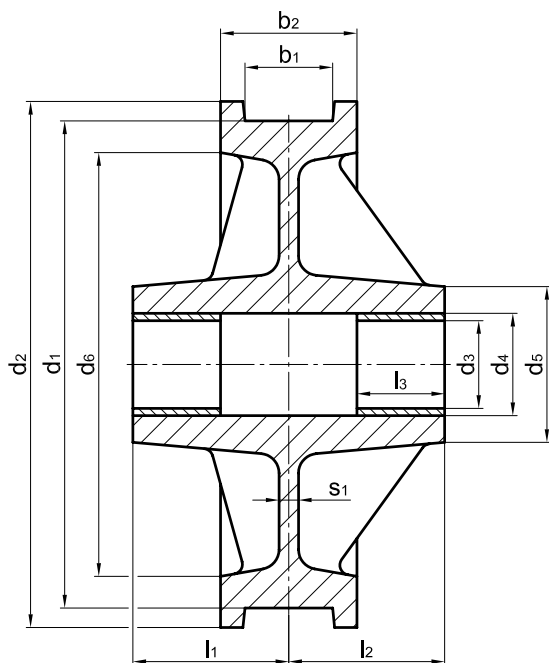
Other materials and dimensions on request.

Crane wheels with gear ring see DIN 15075.

See DIN 15070 for basis of calculation for crane wheels.

Crane wheels with slide bearing without gear ring

DIN 15 074



Form	d1	b1 ¹⁾	b2	l1 ²⁾		l2	d2	d3	d4	d5	d6	l3	s1	s2	No. of ribs	unit weight	
				symetric	asymmetric												
	h9						D10	H7								≈[kg]	
S	200	40-55	90	105	80	60	105	230	45	55	85	170	45	18	-	-	30
S	250	40-55	90	115	85	60	115	280	50	60	100	210	50	18	-	-	48
S	315	45-55	90	125	95	65	125	350	60	75	120	270	63	18	-	-	60
B		60-65	110	135	105	75	135										68
S	400	55-65	110	140	105	75	140	440	80	95	140	345	80	20	-	-	90
B		70-90	140	155	120	90	155										105
S	500	55-65	110	145	110	75	145	540	90	105	160	435	90	20	15	4	130
B		70-90	140	160	125	90	160										150
S	630	65-75	120	165	120	80	165	680	100	120	180	560	100	20	15	6	210
B		80-110	160	185	140	100	185										250
S	710	75-90	140	185	135	90	185	760	110	130	200	630	110	25	18	6	280
B		95-160	210	220	170	125	220										390
S	800	75-90	140	195	140	90	195	850	125	145	220	710	125	25	18	6	350
B		95-160	210	230	175	125	230										470
S	900	75-90	140	205	145	90	205	950	140	160	240	805	150	25	18	6	400
B		95-160	210	240	180	125	240										540
S	1000	75-90	140	205	145	90	205	1050	160	180	270	900	150 ³⁾	30	20	6	525
B		95-160	210	240	180	125	240										680
B	1120	95-160	220	260	190	125	260	1180	180	200	300	1010	180	30	20	8	880
B	1250	95-160	220	260	190	125	260	1310	200	220	330	1140	200 ⁴⁾	30	20	8	1040

1) The dimension of the gauge recess b1 to be stated with order.
For running surface profiles and correspondence of crane rails to running wheel diameter see DIN 15072.

2) Asymmetric hubs (diameter l1) as per agreement.

3) For l1 = 90 mm is a slide bearing length of l3 = 120 mm to use.

4) For l1 = 125 mm is a slide bearing length of l3 = 180 mm to use.