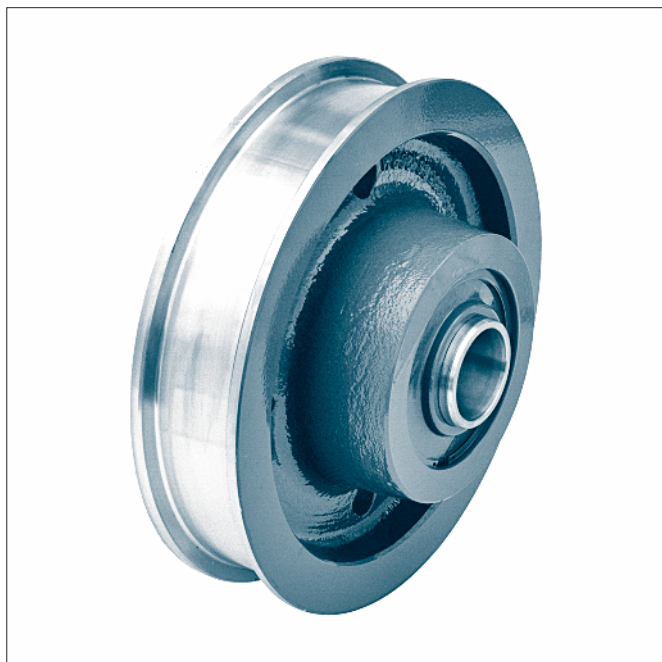


Crane wheels for axle without gear ring

TGL 34964



Form B2 symmetrical hub
covers with radial shaft sealings

Designation of a wheel form B2 with nominal- $\varnothing d_1 = 630$ mm,
gauge $b_2 = 100$ mm, incl. self aligning roller bearing 22224,
covers with radial shaft seal rings:

Crane wheel B2 – 630 × 100 TGL 34964

- Form A1** unsymmetrical hub,
covers with gap-sealing
- Form A2** unsymmetrical hub,
covers with radial shaft sealing
- Form B1** symmetrical hub,
covers with gap sealing
- Form B2** symmetrical hub,
covers with radial shaft sealing

The anti friction bearings are lubricated.

Without certain agreement crane wheels with $\varnothing d_1 \geq 320$ mm
internal bushing with lubrication bore and covers with radial
shaft seal ring.

Material:

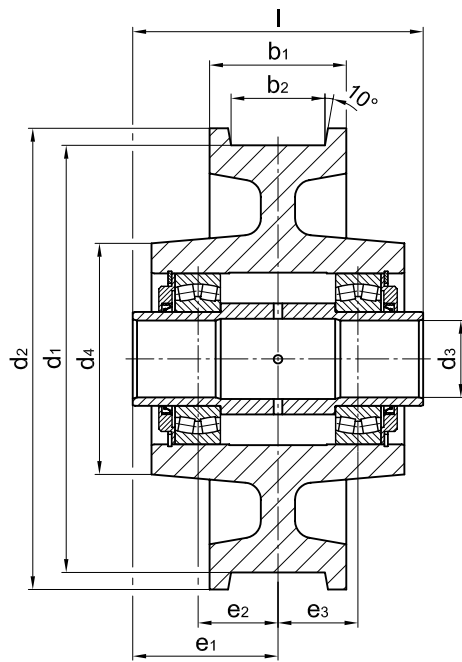
Wheel body- $\varnothing 200 - 250$ C45

Wheel body- $\varnothing 320 - 1000$ GE420 (GS-70) or
G42CrMo4+QT (GS-42CrMo4 V)

Internal bush S355 (St 52)

Other materials and dimensions as well as axles on request.

Crane wheels with gear ring see TGL 34965.



Form B2 symmetrical hub
covers with radial shaft seal ring

form	d ₁	b ₂ ¹⁾	b ₁	d ₂	d ₃	d ₄	e ₁	e ₂	e ₃	l	bearings	unit weight
	h9				D10					-0,5		^a [kg]
200		40-75	105									
250		40-80	110									
320		40-80	110									
400		40-90	125									
		90-100	140									
500		40-90	125									
		100-120	160									
630		60-90	140									
		100-120	180									
710		60-90	140									
		100-130	180									
800		80-110	160									
		120-130	200									
1000		100-150	210									

Dimensions on request

1) The dimensions of the gauge recess b₂ to be stated with order.