

**Form B2** symmetrical hub, covers with radial shaft seal ring,  
nominal- $\varnothing$   $d_1$   $\leq$  500 mm



**Form B2** symmetrical hub, covers with radial shaft seal ring,  
nominal- $\varnothing$   $d_1$   $\geq$  630 mm

Designation of a crane wheel form B2 with nominal- $\varnothing$   $d_1$  = 630 mm, gauge  $b_2$  = 100 mm, incl. self aligning roller bearings 22224, covers with radial shaft seal ring, with large gearing (Zentrier- $\varnothing$   $d_5$  = 530 and number of teeth 62):

**Crane wheel B2 – 630 × 100 – 530 × 62 TGL 34965**

- Form A1** unsymmetrical hub,  
covers with gap sealing
- Form A2** unsymmetrical hub,  
covers with radial shaft seal ring
- Form B1** symmetrical hub,  
covers with gap sealing
- Form B2** symmetrical hub,  
covers with radial shaft seal ring

The rolling bearings are lubricated.

Without certain agreement crane wheels with  $\varnothing d_1 \geq 320$  mm internal bushing with lubrication bore and covers with radial shaft seal ring.

Material:

Wheel body- $\varnothing$  200 – 250 C45

Wheel body- $\varnothing$  320 – 1000 GE420 (GS-70) or  
G42CrMo4+QT (GS-42CrMo4 V)

Internal bush S355 (St 52)

Gear ring C45 or GE300 (GS-60)

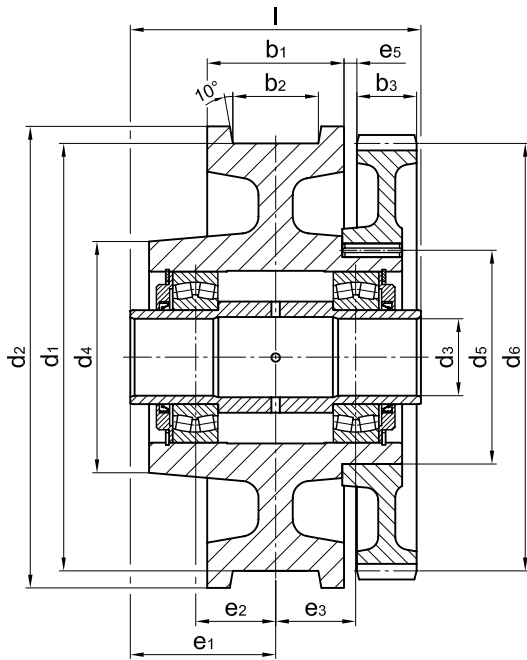
**Other material and dimensions as well as axles on request.**

Gear rings see TGL 34966

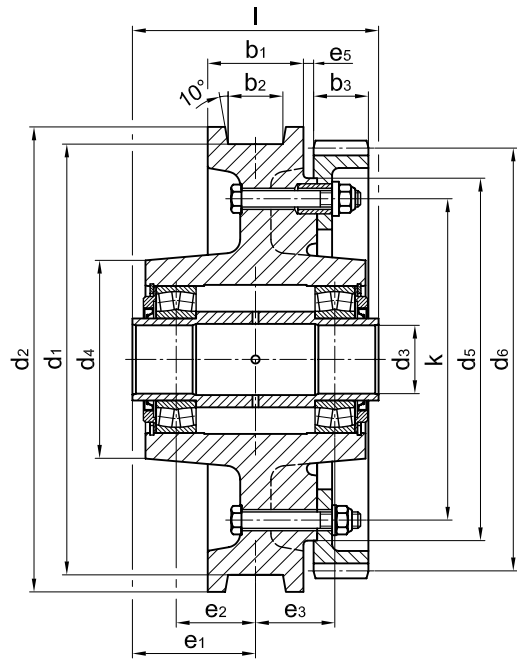
Crane wheels without gear ring see TGL 34964.

# Crane wheels for axle with gear ring

TGL 34965



**Form B2** symmetrical hub, covers with radial shaft seal ring, nominal-Ø d<sub>1</sub> ≤ 500 mm



**Form B2** symmetrical hub, covers with radial shaft seal ring, nominal-Ø d<sub>1</sub> ≥ 630 mm

form	d <sub>1</sub>	b <sub>2</sub> <sup>1)</sup>	b <sub>1</sub>	d <sub>2</sub>	d <sub>3</sub>	d <sub>4</sub>	d <sub>5</sub>	gear ring <sup>2)</sup>				e <sub>1</sub>	e <sub>2</sub>	e <sub>3</sub>	e <sub>5</sub>	k	l	bearings	unit weight
								b <sub>3</sub>	d <sub>6</sub>	m	z								
	h9				D10												-0,5		*[kg]
	<b>200</b>	40-75	105																
	<b>250</b>	40-80	110																
	<b>320</b>	40-80	110																
	<b>400</b>	40-90	125																
		90-100	140																
	<b>500</b>	40-90	125																
		100-120	160																
	<b>630</b>	60-90	140																
		100-120	180																
	<b>710</b>	60-90	140																
		100-130	180																
	<b>800</b>	80-110	160																
		120-130	200																
	<b>1000</b>	100-150	210																

Dimensions on request

1) The dimension of the gauge recess b<sub>2</sub> to be stated with order.

2) Tooth form acc. to DIN 867 without appending modification. Pressure angle 20 degree.