

## Crane wheels

for driven and nondriven wheel sets acc. to TGL 34968

**TGL 34968**



**Crane wheel body A 630 × 90**  
(narrow type)



**Crane wheel body A 630 × 110**  
(broad type)

Designation of a wheel with nominal- $\varnothing$   $d_1 = 400$  mm, gauge  $b_2 = 80$  mm, bores- $\varnothing$   $d_3 = 105$  H7, with feather keyway acc. to DIN 6885-1:

**Crane wheel body A 400 × 80 × 105 H7 TGL 34968**

**Form A** with feather keyway acc. to DIN 6885-1

**Form B** without feather keyway

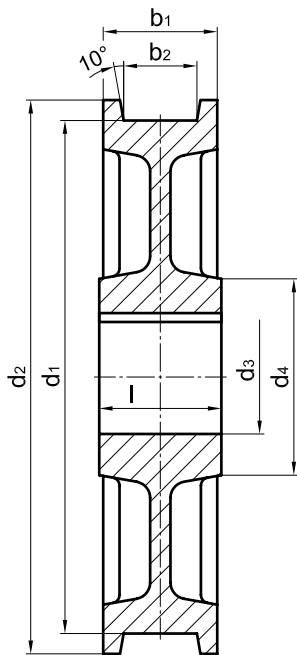
Material: GE420 (GS-70) or  
G42CrMo4+QT (GS-42CrMo4 V)

**Other material and dimensions on request.**

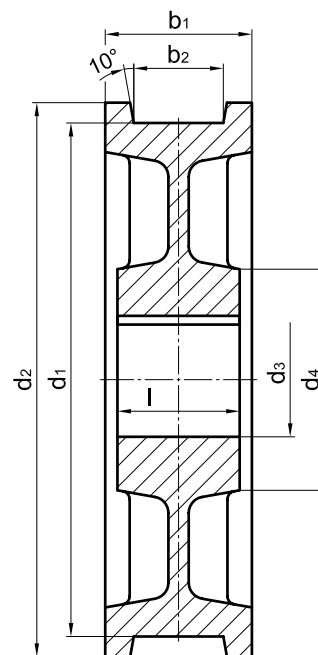
# Crane wheels

for driven and nondriven wheel sets acc. to TGL 34968

**TGL 34968**



**Crane wheel body A 630 × 90**  
(narrow type)



**Crane wheel body A 630 × 110**  
(broad type)

form	nominal-Ø $d_1$	$b_2$ <sup>1)</sup>	$b_1$	$d_2$	$d_3$	$d_4$	$l$	unit weight
	h9				H7		+0,2	<sup>a</sup> [kg]
A; B	<b>320</b>	40-70	100	<b>Dimensions on request</b>				
		80-90	130					
A; B	<b>400</b>	50-80	120					
		90-120	160					
A; B	<b>500</b>	50-80	120					
		90-120	160					
A; B	<b>630</b>	60-90	140					
		100-130	180					
A; B	<b>710</b>	60-80	140					
		90-130	180					
A; B	<b>800</b>	80-90	160					
		100-130	200					
A; B	<b>900</b>	90-110	190					
		120-150	210					

1) The dimension of the gauge recess  $b_2$  to be stated with order.