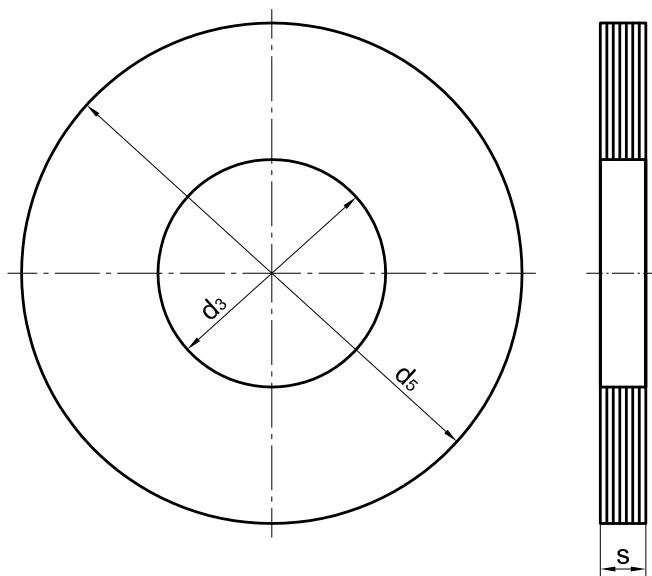
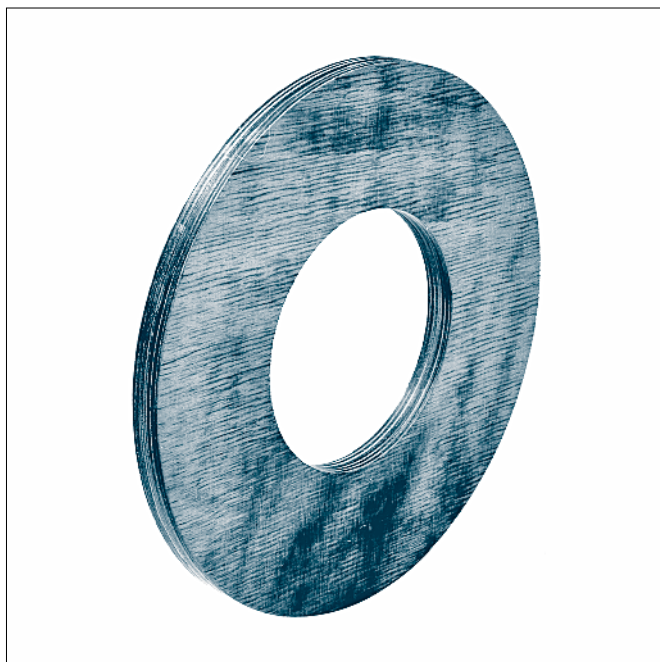


Wearing washers

fitting to travel wheels according to KG 010.2, KG 014 and KG 015

similar to DIN 15 069

KG 010.3



Designation of a wearing washer for wheel- $\varnothing d_1 = 300$ mm, axle- $\varnothing d_3 = 50$ mm, thickness of the washer $s = 10$ mm:

Wearing washer 50 × 10 KG 010.3

Material:

Laminated wood bound with synthetic resin (unsuitable for wet environment)

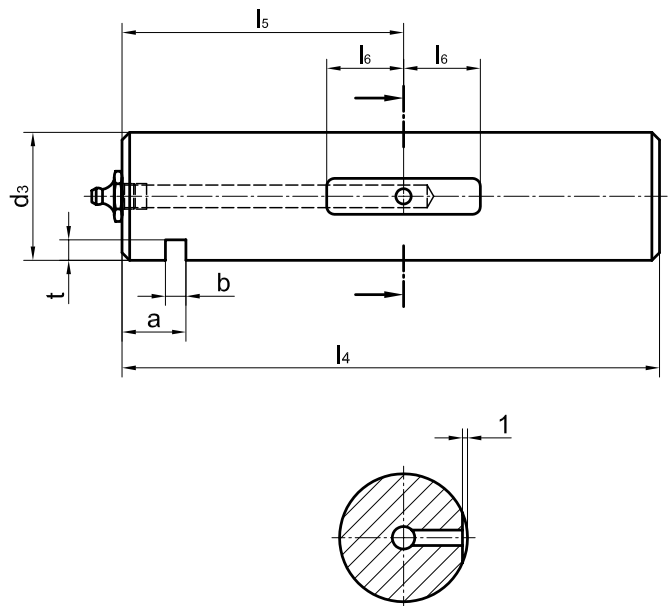
Other material and dimensions on request.

for wheel- $\varnothing d_1$	d_3	s	d_5
	+1,0 +0,5	+0,2 -0,2	
160 200	40	5 10	90
250 300	50	5 10	110
315	55	5 10	120
400	60	5 10	140
500	70	5 10	160
630	80	5 10	170

Wheel axles with lubrication bore

fitting to wheels according to KG 010.2 and KG 030

KG 010.4



Designation of an axle for travel wheel - $\varnothing d_1 = 300$ mm, axle- $\varnothing d_3 = 50$ mm, length 210 mm:

Axle 50 × 210 KG 010.4

Supplied with spherical grease nipple
AM 10 × 1 DIN 71412.

Material: 42CrMo4+QT or C45

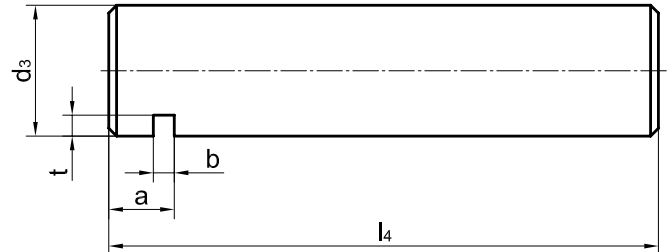
Other material and dimensions on request.

for wheel- $\varnothing d_1$	d_3	l_4	l_5	l_6	a	b	t	unit weight
	f7					+0,5	+0,5	^a [kg]
160 200	40	190	100	30	25	8	7	1,8
250 300	50	210	110	30	25	8	8	3,1
315	55	265	135	40	25	8	9	4,8
400	60	265	135	40	25	8	9	5,7
500	70	285	150	50	25	10	10	8,5
630	80	335	170	50	25	10	10	13

Wheel axle without lubrication bore

fitting to travel wheels according to KG 014

KG 010.6



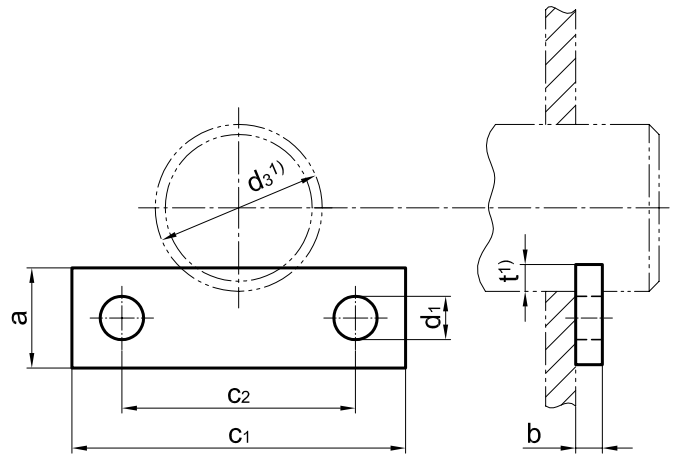
Designation of an axle for travel wheel- $\varnothing d_1 = 300$ mm, axle- $\varnothing d_3 = 50$ mm, length 210 mm:

Axle 50 × 210 KG 010.6

Material: 42CrMo4+QT or C45

Other material and dimensions on request.

for wheel- $\varnothing d_1$	d_3	l_4	a	b	t	unit weight
	f7			+0,5	+0,5	^a [kg]
200	40	190	25	8	7	1,8
250 300	50	210	25	8	8	3,1
315	55	265	25	8	9	4,8
400	60	265	25	8	9	5,7



The axle brackets have to be placed in way, that the fastening screws are not stressed by the pressure of the axle.

Designation of an axle bracket width $a = 30$ mm, thickness $b = 8$ mm:

Axle bracket 30 × 8 DIN 15 058

Material: S235JR (St 37)

Other material and dimensions on request.

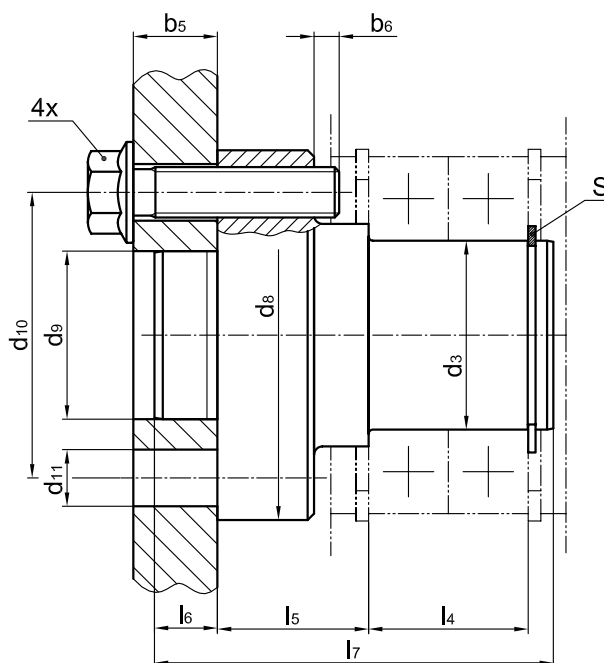
a	b	c_1	c_2	d_1
20	5	60	36	9
25	6	80	50	11
30	8	100	70	13
40	10	140	100	17
50	12	190	140	21
60	16	250	200	25

1) Dimensions see wheel axles KG 010.4, KG 010.6 and KG 015.

Wheel axles

fitting to travel wheels according to KG 020
for an easy assembly into steel structures

KG 020.1



Designation of an axle for travel wheel- $\varnothing d_1 = 200$ mm:

Axle 200 KG 020.1

The supply takes place supplied fully machined, including cir-clip and 4 locking screws.

Material: 42CrMo4+QT

Other materials, dimensions or wheel axle for welding on Request.

for wheel- \varnothing d_1	d_3	d_8	d_9 - 0,1	d_{10}	d_{11}	l_4	l_5	l_6	l_7	locking screws (included)	$b_5^{1)}$	b_6 max.	S circlip DIN 471
130	30	67	25	48	4x $\varnothing 11$	32	23	10	70	M10x30 10.9	12-16	5	30x1,5
160	35	77	35	58	4x $\varnothing 11$	34	31,5	11	82	M10x35 10.9	12-20	6	35x1,5
200	45	88	40	68	4x $\varnothing 13,5$	38	36	12	92	M12x40 10.9	12-25	7	45x1,75
300	65	127	50	98	4x $\varnothing 17,5$	46	44,5	16	114	M16x50 10.9	16-30	11	65x2,5

1) For different metal gauge b_5 other lengths of the screws are required.

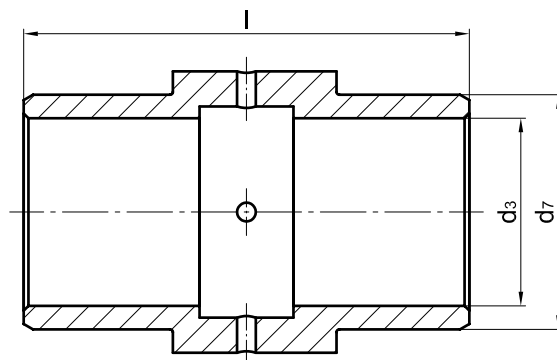
Bushing for crane wheels KG 030

similar DIN 15 049

KG 030

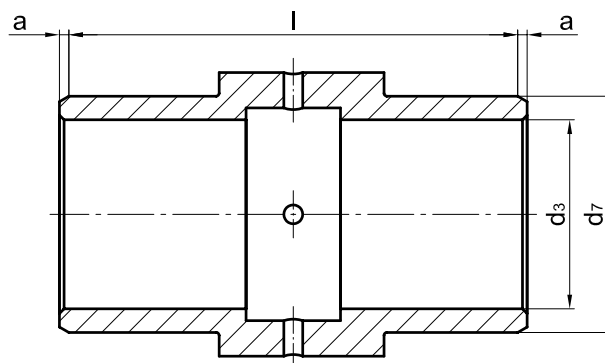
Design 1

length of the bush correlates with the width of the wheel



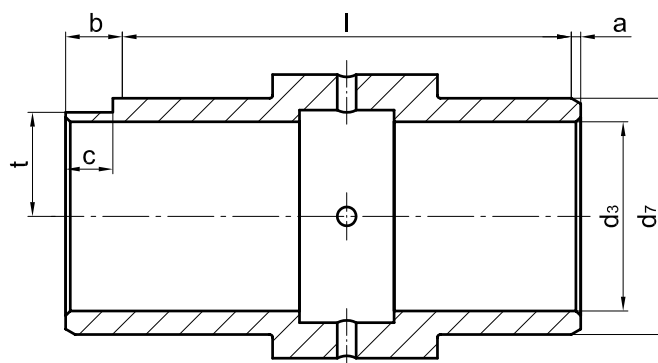
Design 2

bush both-sided over laying at gauge, against wheelbody



Design 3

bush both-sided over laying against wheel body and with flattening against rotation (mounted on flush hub side resp. opposite gear ring)



dimensions of the bushing

for Rad-Ø d_1	d_3	d_7	a	b	c	t	l
	E9	g6					-0,5
200	40	50	2	12	10	22	95
250	50	60	2	12	10	27,5	120
300	50	65	3	13	10	29	120
315	55	75	3	13	10	32,5	140
400	60	90	5	15	10	40	140
500	70	100	5	15	10	45	170
630	80	110	5	15	10	50	200