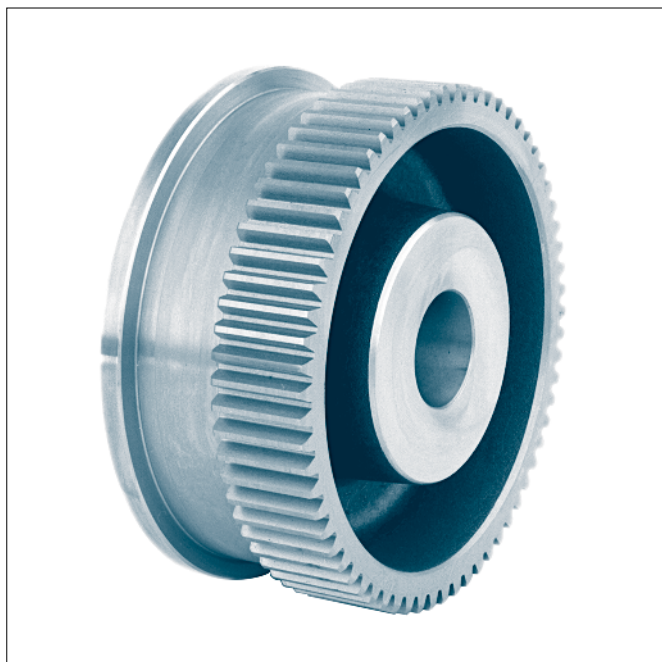


Crane wheels with smooth bore

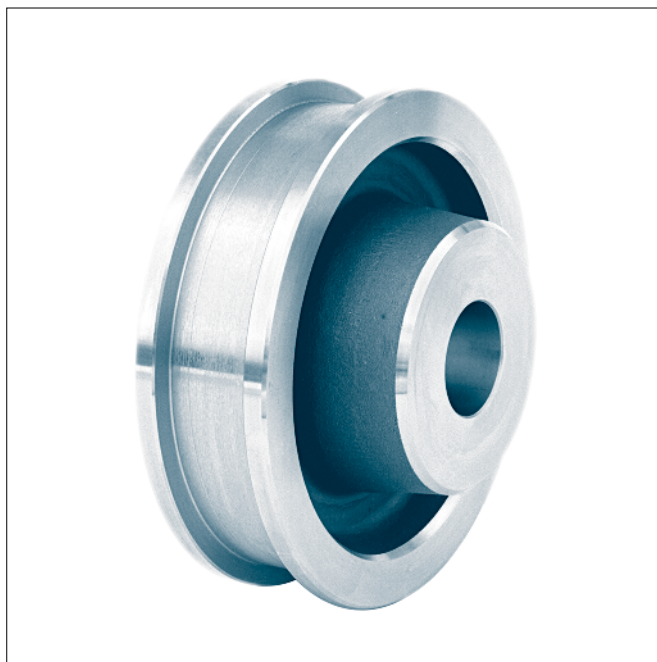
or with feather keyway to DIN 6885-1

DIN 15 049

KG 010.1



form A with gear ring



form B without gear ring

Designation of a crane wheel form A with gear ring, nominal diameter $d_1 = 300$ mm, gauge $b_1 = 50$ mm, bore diameter $d_4 = 80$ mm H7, module 3 and number of teeth 110:

Crane wheel A 300 × 50 × 80 H7 – 3 × 110 KG 010.1

Form A with gear ring

Form B without gear ring

Material:

Wheel body- $\varnothing 160-500$ C45 drop forged

Wheel body- $\varnothing 630$ GE420 (GS-70) with ribs

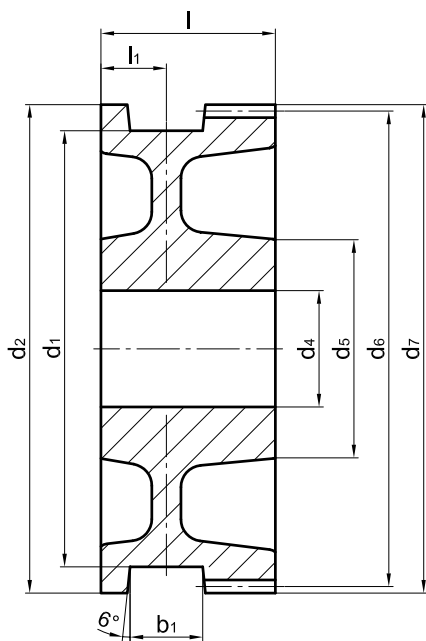
Other material and dimensions on request.

Crane wheels with smooth bore

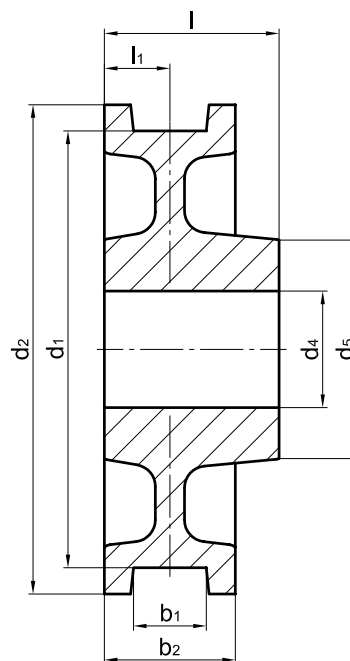
or with feather keyway according to DIN 6885-1

DIN 15 049

KG 010.1



Form A with gear ring



Form B without gear ring

wheel- Ø d ₁	b ₁ ¹⁾	b ₂	d ₂	d ₄ ¹⁾	d ₅	l	l ₁	gear ring ²⁾ (Form A)				unit weight ³⁾ [kg]		wheel load [kg] ³⁾
								mo- dule	number of teeth	d ₆	d ₇	Form A	Form B	
160	30-60	80	186	30-65	85	95	40	2,5	72	180	185	10	8,5	3 300
								3	60		186			
200	30-60	80	232	30-90	117	95	40	3	75	225	231	17,5	16	4 300
								4	56	224	232			
250	30-60	80	274	40-110	142	120	40	3	88	264	270	30	25	5 600
								4	66		272			
300	35-65	90	336	40-120	152	120	45	3	110	330	336	43	37	7 250
								4	82	328				
315	40-75	100	348	50-130	167	140	50	4	85	340	348	54	48	9 000
400	40-75	100	432	50-160	197	140	50	4	106	424	432	86	71	11 900
500	50-85	110	540	60-180	230	170	55	6	88	528	540	156	125	17 000
630	55-95	120	680	80-130	180	200	60	8	83	664	680	235	181	22 100

1) The dimension of the gauge recess b₁ and bore diameter d₄ to be stated with order.

2) Module and number of teeth to be stated with order.
Tooth form according to DIN 867 without profile correction.
Pressure angle 20 degree.

3) The wheel loads stated are obtained from the maximum permissible pressure between wheel and rail with maximum possible rail head width of the corresponding wheel and v ≤ 40 m/min.

Wheels with smooth bore

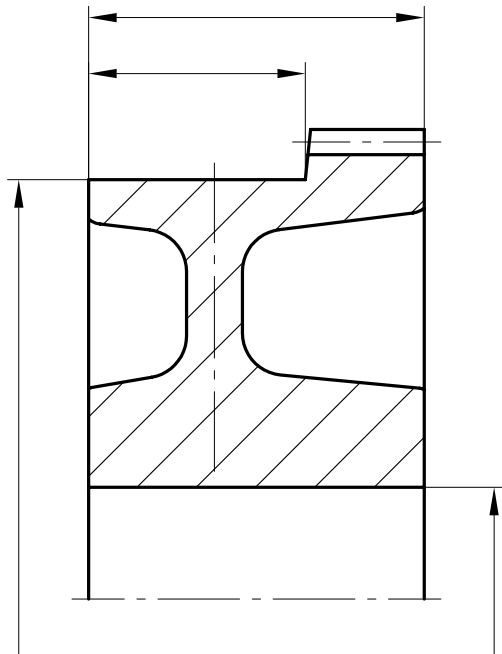
or with feather keyway according to DIN 6885-1

DIN 15 049

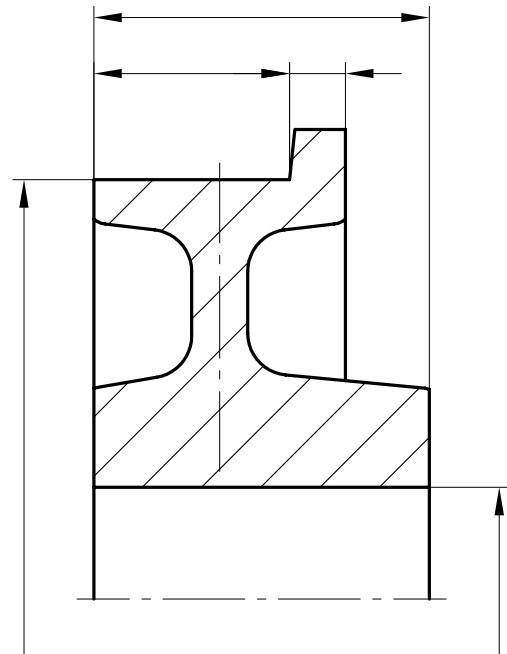
KG 010.1

Examples of possible types of the running surface and of the crane wheels.

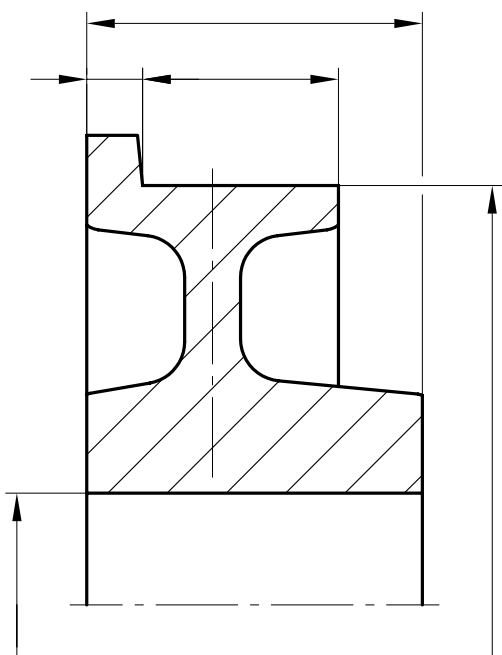
Desired type and dimensions to be stated with order.



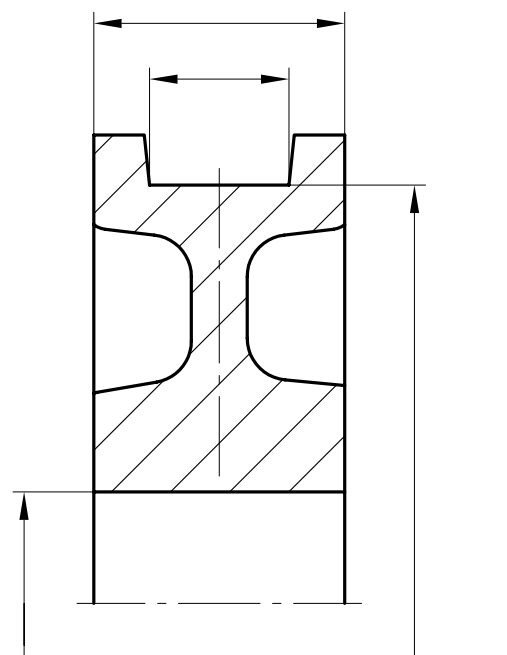
Type 1
Travel wheel form A
without wheel flanges, with gearing



Type 2
Travel wheel form B
with single wheel flange on overhanging hub



Type 3
Travel wheel form B
with single wheel flange on flush hub



Type 4
Travel wheel form B
with shortened hub

Crane wheels with smooth bore

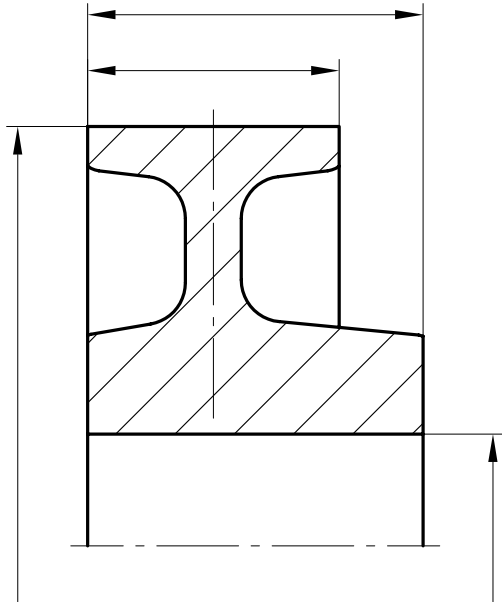
or with feather keyway according to DIN 6885-1

DIN 15 049

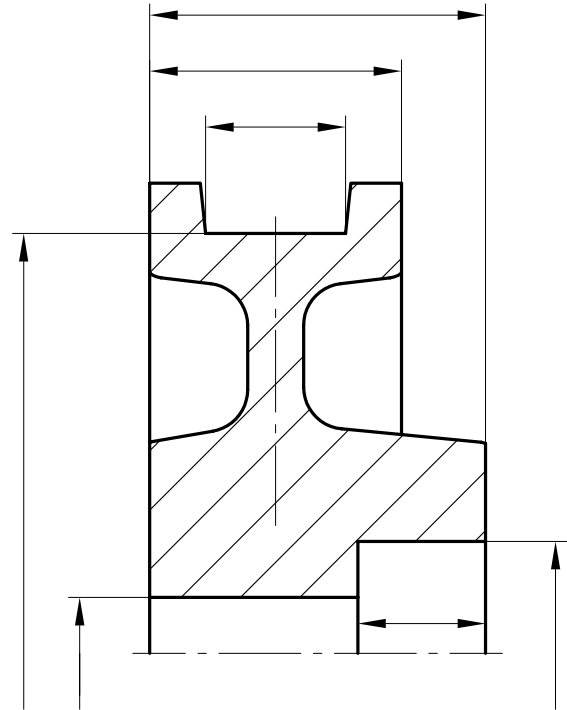
KG 010.1

Examples of possible types of the running surface and of the crane wheels.

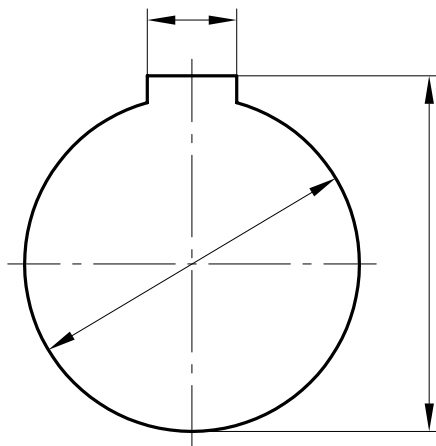
Desired type and dimensions to be stated with order.



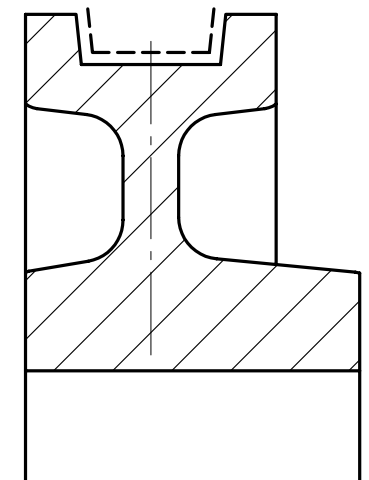
Type 5
Travel wheel form B
without wheel flanges



Type 6
Travel wheel form B
with bore for locking elements



Bore with feather keyway according to DIN 6885-1



Running surface and wheel flange surfaces
hardened free of slip (e.g. for material C45
HRc 38-46, hardening depth 3-4 mm)