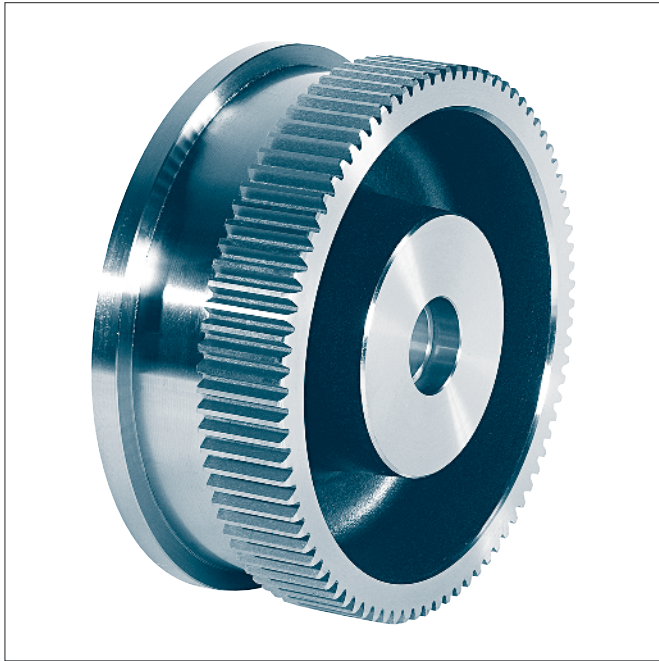


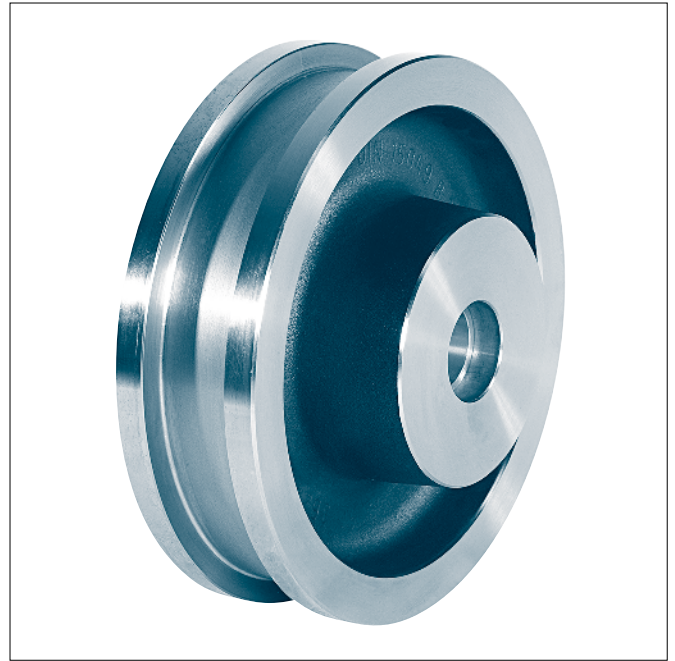
Crane wheels with slide bearing

suitable for older travelling devices Demag brand

KG 012



Form A with gear ring



Form B without gear ring

Designation of a travel wheel form A with gear ring, nominal- \varnothing $d_1 = 300$ mm, gauge $b_1 = 55$ mm, with plain bearing $\varnothing 60/50$ of Rg 7, module 3 and number of teeth 110:

Crane wheel A 300 × 55 × 60 – 3 × 110 KG 012

Form A with gear ring

Form B without gear ring

Other types of the running surface see KG 010.1.

The plain bearings are secured with setscrews towards twisting and dislocation.

Material:

Wheel body- $\varnothing 300-500$ C45 drop forged

Wheel body- $\varnothing 630$ GE420 (GS-70) with Ribs

Plain bearings G-CuSn7ZnPb (Rg 7)

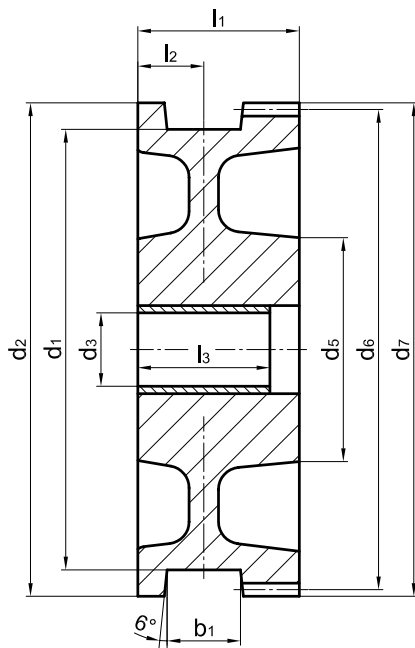
Other material and dimensions on request.

Suitable wheel axles see KG 010.4.

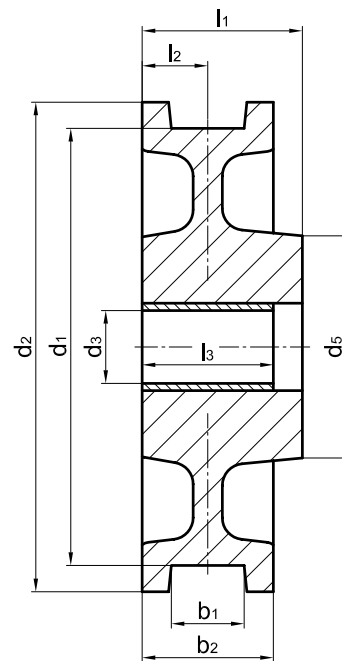
Crane wheels with slide bearing

suitable for older travelling devices Demag brand

KG 012



Form A with gear ring



Form B without gear ring

wheel- Ø d ₁	b ₁	b ₂	d ₂	d ₃	d ₅	l ₁	l ₂	l ₃	gear ring ²⁾ (form A)				unit weight ^{a)} [kg]		Demag Spare no.	
									modu- lel	no. of teeth	d ₆	d ₇	form A	form B	form A	form B
h11				E9												
300	55	90	330	50	152	110 ²⁾ 90	45	90	3	110	330	336	43	37	963 617 44	-
320	55	98	348	50	167	138	49	100	4	85	340	348	55	49	963 333 44	963 338 44
400	55 65	98	432	60	197	138	49	100	4	106	424	432	86	71	963 433 44 963 453 44	963 438 44 963 458 44
500	70	105	540	70	230	166	52,5	110	6	88	528	540	156	125	963 535 44	963 528 44
630	75/85 ¹⁾	120	680	80	180	200	60	120	8 6	83 111	664 666	680 678	235	181	-	-

1) The dimension of the gauge recess b₁ to be stated with order.

2) Overall width 110 mm, Hub length 90 mm.

3) Module and number of teeth to be stated with order.

Tooth form according to DIN 867 without appending modification,

Pressure angle 20 degree.