

## Crane wheels for rotating shafts

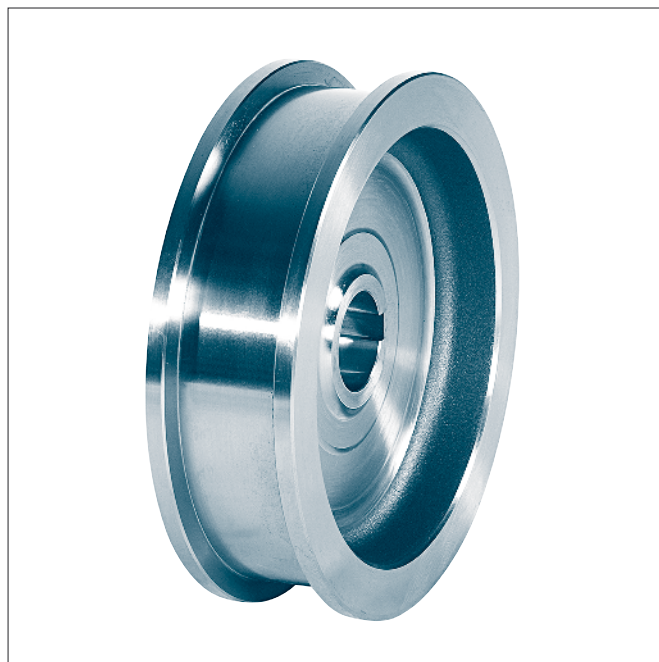
with feather keyway according to DIN 6885-1

suitable for older types of the trolley traveling winches Demag brand

**KG 013**



**Form A** with gear ring



**Form B** without gear ring

Designation of a travel wheel form A with gear ring, nominal- $\varnothing$   $d_1 = 200$  mm, gauge  $b_1 = 55$  mm, bore- $\varnothing$   $d_2 = 45$  mm H7, module 4 and number of teeth 58:

**Crane wheel A 200 × 55 × 45 H7 – 4 × 58 KG 013**

**Form A** with gear ring

**Form B** without gear ring

Material: C45

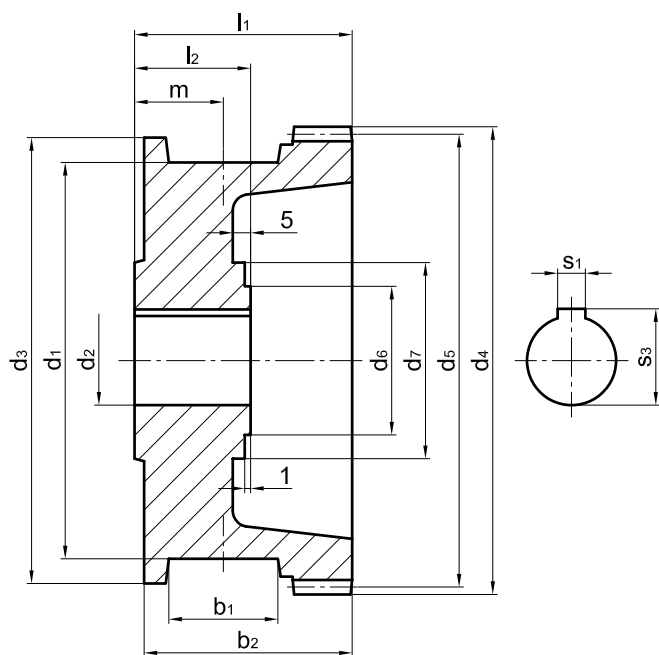
**Other material and dimensions on request.**

# Crane wheels for rotating shafts

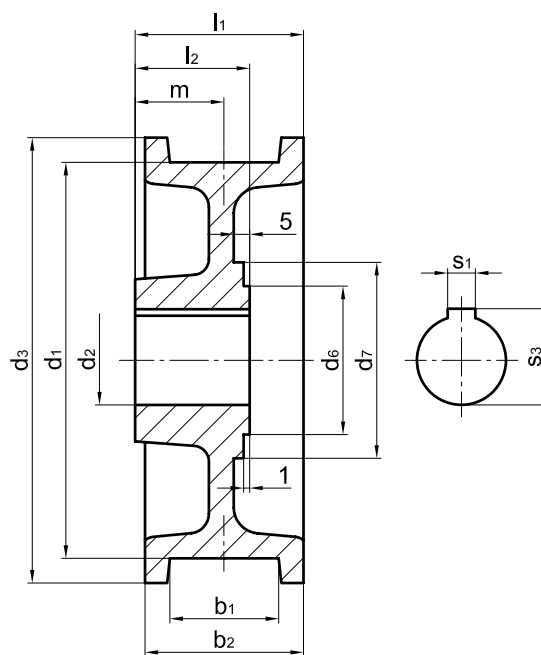
with feather keyway according to DIN 6885-1

suitable for older types of the trolley traveling winches Demag brand

## KG 013



**Form A** with gear ring



**Form B** without gear ring

wheel- Ø d <sub>1</sub>	b <sub>1</sub>	b <sub>2</sub>		d <sub>2</sub>	d <sub>3</sub>	d <sub>6</sub>	d <sub>7</sub>	l <sub>1</sub>		l <sub>2</sub>	m	s <sub>1</sub>	s <sub>3</sub>	gear ring <sup>1)</sup> (form A)				unit weight <sup>2)</sup> [kg]		Demag spare no.	
		form A	form B					form A	form B					form A	form B	form A	form B	form A	form B	form A	form B
h11				H7				form A	form B					mo- dule	no. of teeth	d <sub>4</sub>	d <sub>5</sub>	form A	form B	form A	form B
<b>200</b>	55	105	80	45	<b>Dimensions on request</b>										4	58	<b>Dimensions on request</b>		598 456 44	598 458 44	
			60	598 344 44											598 346 44						
<b>250</b>	55	105	80	50											4	71			598 856 44	598 858 44	
			65	598 876 44											598 878 44						

1) Gearing corrected, addendum modification coefficient x = -0,5.

Pressure angle 20 degree.