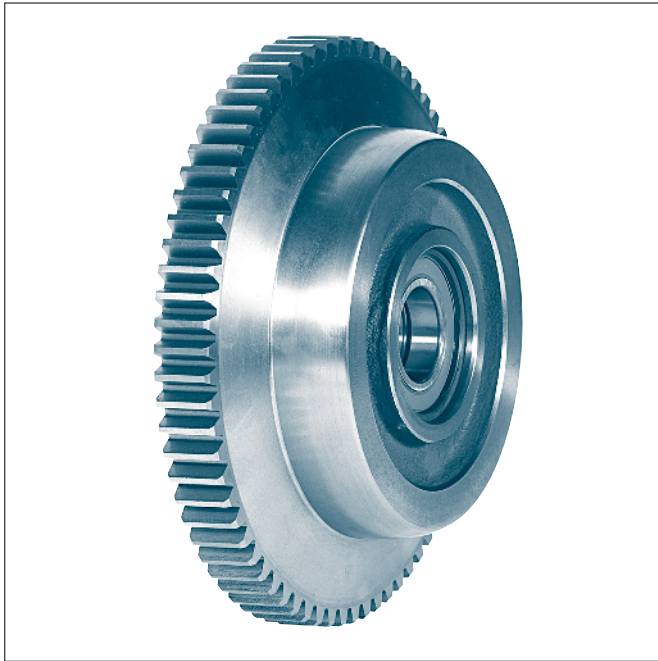


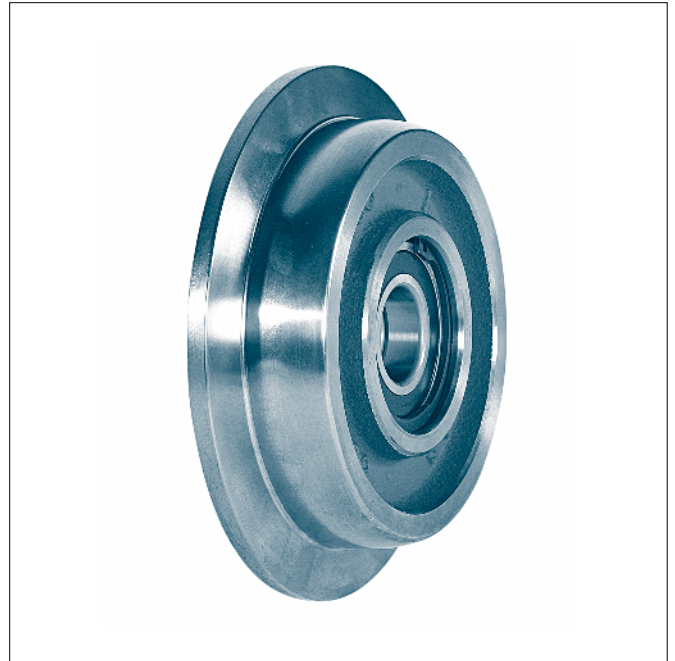
Crane wheels with single wheel flange

for I- and IPE girder (DIN 1025)

KG 020



Form A with gear ring



Form B without gear ring

Designation of a wheel with single wheel flange, form A with gear ring, nominal- $\varnothing d_1 = 300$ mm, complete with anti friction bearings:

Crane wheel A 300 KG 020

Form A with gear ring

Form B without gear ring

The running surface width b_1 is one half each cylindric/spheric.

The rolling bearings are lubricated for life.

Material:

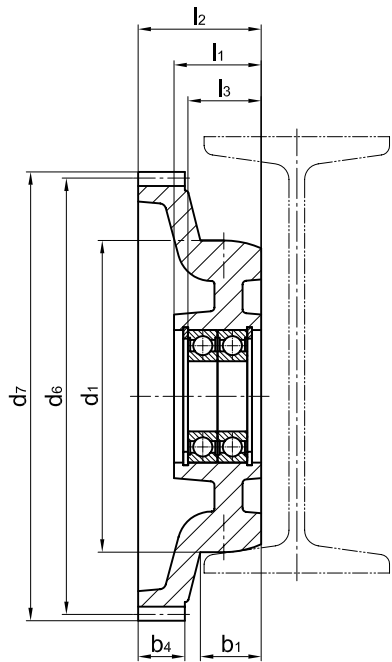
Wheel body EN-GJS-600-3 (GGG-60)

Other materials and dimensions on request.

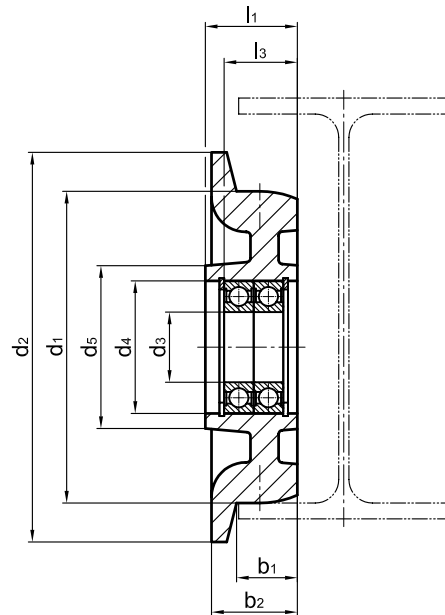
Crane wheels with single wheel flange

for I-girder from I-and IPE-series according to DIN 1025

KG 020



Form A with gear ring



Form B without gear ring

wheel- Ø d ₁	b ₁	b ₂	b ₄	d ₂	d ₃	d ₄	d ₅	l ₁	l ₂	l ₃	rolling bearingsr	gear ring ¹⁾ (form A)				unit weight ^a [kg]		wheel load [kg] ²⁾
												mo- dule	no. of teeth	d ₆	d ₇	Form A	Form B	
h11						M7												
130	26	38	25	160	30	62	80	46	58	39	6206-2RS	3	52	156	162	3	2,5	1900
160	31,5	44	30	200	35	72	90	49	69	41,5	6207-2RS	4	53	212	220	6	5	2500
200	39	55	30	250	45	85	105	56	79	47	6209-2RS	4	70	280	288	13,5	9,5	3300
300	56	73	30	340	65	120	150	73	100	59,5	6213-2RS	4	100	400	408	37	28	5500

1) Module and number of teeth to be stated with order.

Tooth form according to DIN 867 without profile correction.

Pressure angle 20 degree.

2) The wheel loads stated are valid for $v \approx 10$ m/min with an endurance of approximately 3 600 hours.