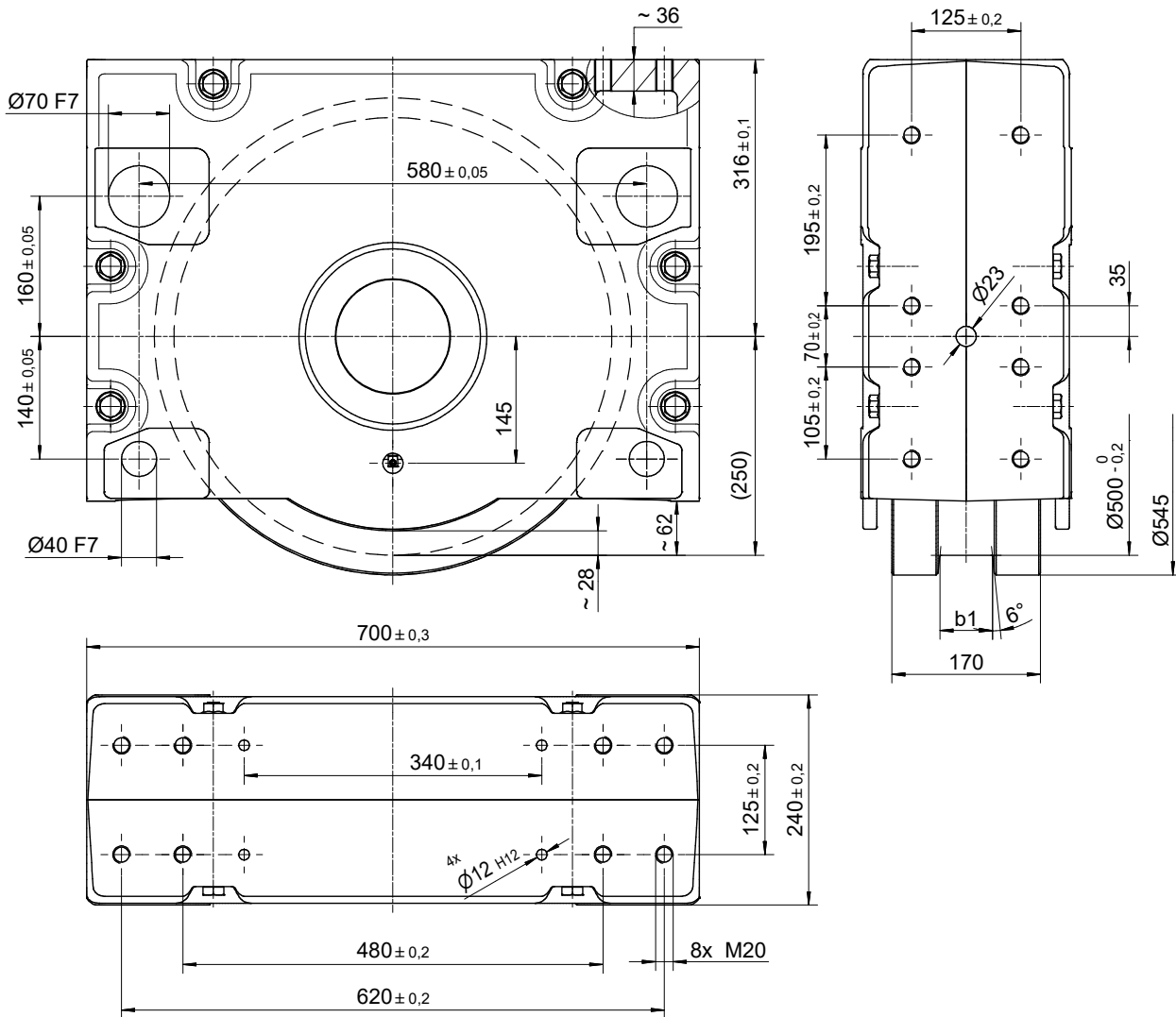

Wheel block

RB 500

Wheel block RB 500

Primary dimensions



Weight: ca. 310 kg
max. wheel load: 40 000 kg

Ordering examples

RBA 500×90

wheel block 500, driven, with internal taper, with two-sided wheel flange, design Form 1, running tread 90 mm

RBN 500×90

Wheel block 500, non- driven, without internal taper, with two-sided wheel flange, design Form 1, running tread 90 mm

RBA 500×130

Wheel block 500, driven, with internal taper, with one-sided wheel flange design Form 2, running tread 130 mm

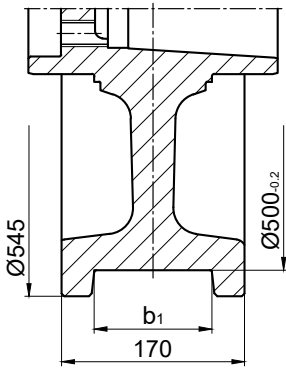
RBA 500×170

Wheel block 500, driven, with internal taper, without wheel flanges, design Form 4

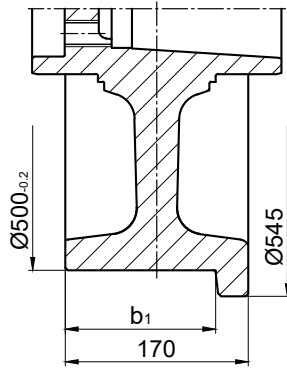
Design RBA and RBN refer to Page 5

Radblock RB 500

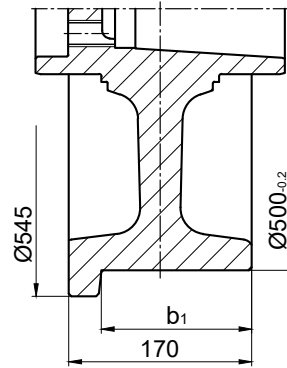
Standard models



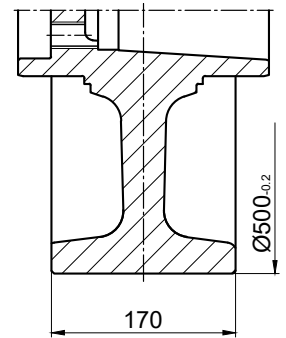
Form 1
two-sided wheel flange



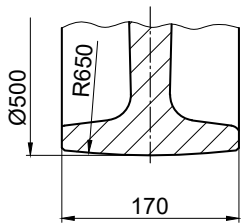
Form 2¹⁾
one-sided wheel flange
on the drive side



Form 3¹⁾
one-sided wheel flange
opposite to the drive side

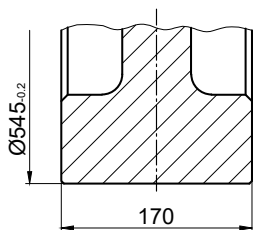


Form 4
no wheel flanges with
cylindrical running surface

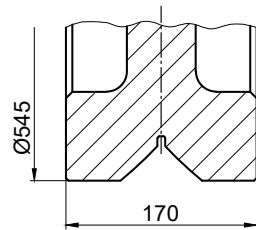


Form 5
no wheel flanges with
spherical running surface

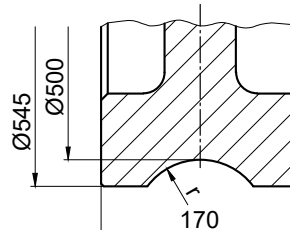
Special models



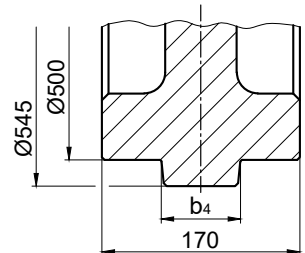
Form 9
no wheel flanges, wide
with cylindrical running surface



Form 10
with prismatic guide



Form 11
with concave groove
 $r = 1,1 \times \text{track radius}$
(recommended)



Form 12
with middle wheel flange

| Form 1 | | | Form 2 und 3 | |
|---|---------|----------|---|---------|
| Running tread b_1 or two-sided wheel flange | | | Running tread b_1 or one-sided wheel flange | |
| minimal | maximal | Standard | minimal | maximal |
| 60 | 130 | 90 | 115 | 150 |

1) Forms 2 and 3 are identical for the non-driven Wheel block RBN

Wheel block RB 500

Connection options

Top connection KA 500.1

Precisely fitted direct attachment as bolted connection (welded construction, roll section, etc.

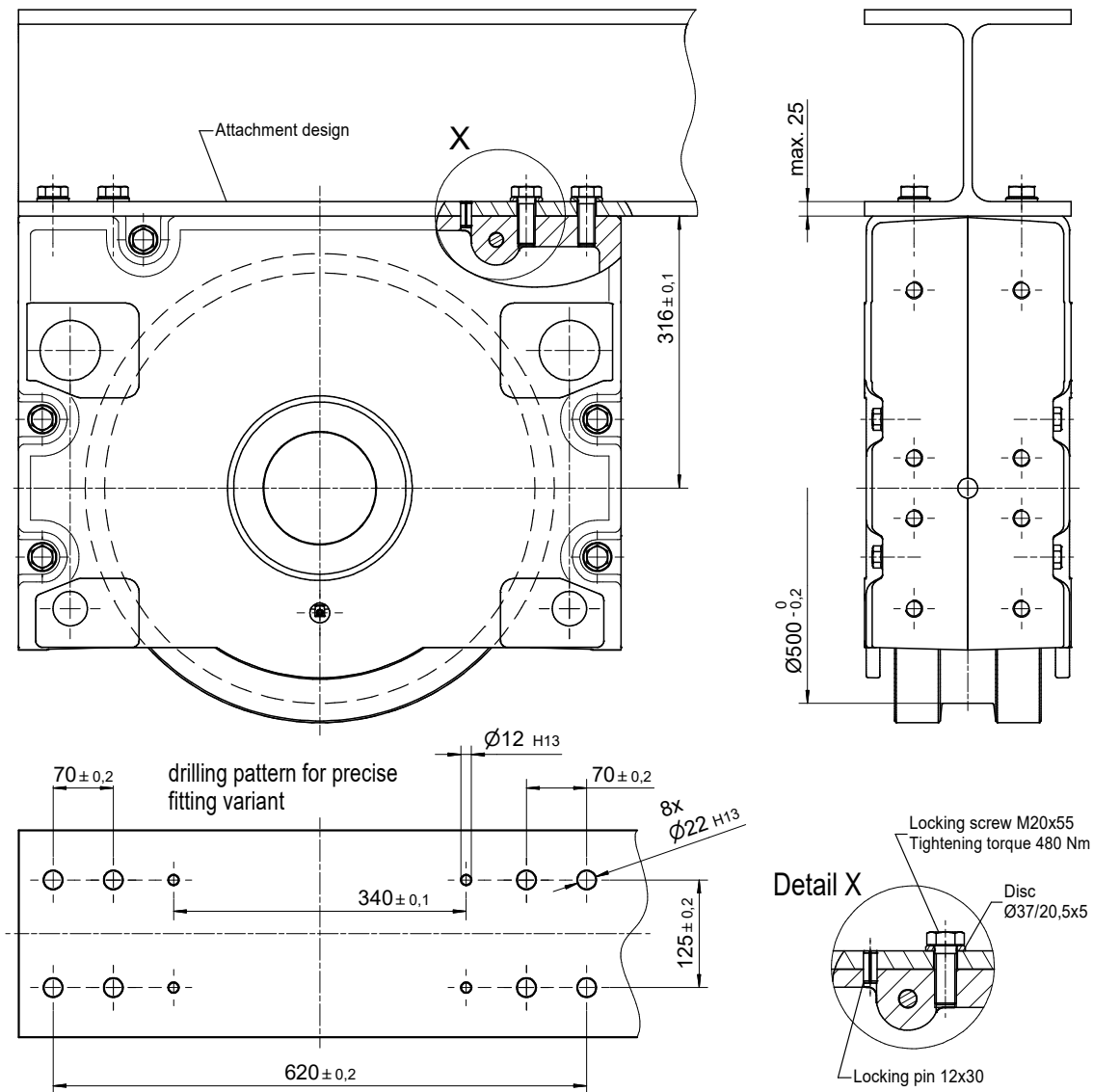
Top connection using locking screws for installation in accurately drilled connecting constructions. No adjustment of the wheel block is required.

1 Set KA 500.1 comprising of:

- 8 Hexagon screw with thread locking M20×55 – 10.9
DIN EN ISO 4017 (DIN 933)
- 8 Discs $\varnothing 37 / 20,5 \times 5$
- 4 Locking pins 12×30 DIN EN ISO 8752 (DIN 1481)

Mounting parts for larger sheet thicknesses and/or adjustable direct connection are available on request.

For the directional version refer to the pattern of drilling KA 500.2 (Page 148).



Wheel block RB 500

Connection options

Top connection KA 500.2

Adjustable direkt attachment as bolted connection (welded construction, roll section, etc.)

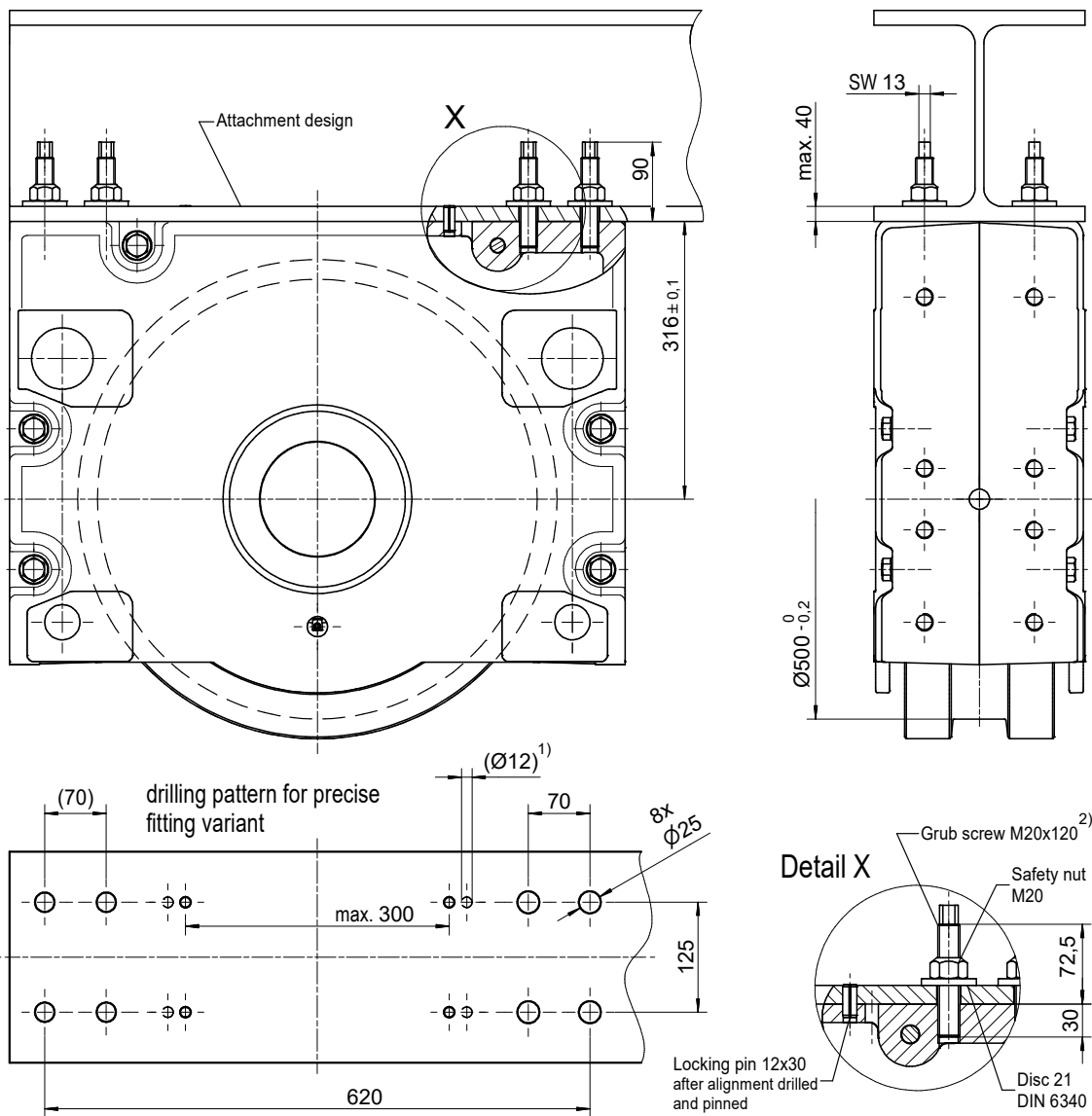
Top connection using locking pins for installation in attachment design with precisely or larger drilled attachment holes.

For larger drilled attachment holes, the wheel block must be aligned. Subsequently, the wheel block is attached by bolts and should be drilled with the locking pins 12×30 supplied. However, this should not be done in the area of the attachment bolts or the existing adjusting pin hole [1)]. Alignment is not required for precisely drilled attachment holes.

1 Set KA 500.2 comprising of:

- 8 Grub screws M20×120 - 10.9 ZT
- 8 Safety nuts M20-10 DIN EN ISO 7042 (DIN 980)
- 8 Discs 21 DIN 6340
- 4 Locking pins 12×30 DIN EN ISO 8752 (DIN 1481)

Longer locking pins are available for thicker plates.



1) Pinning is not permitted in this area !

2) Can be factory-glued in the wheel block housing on request

Wheel block RB 500

Connection options

Pin attachment BA 500.2

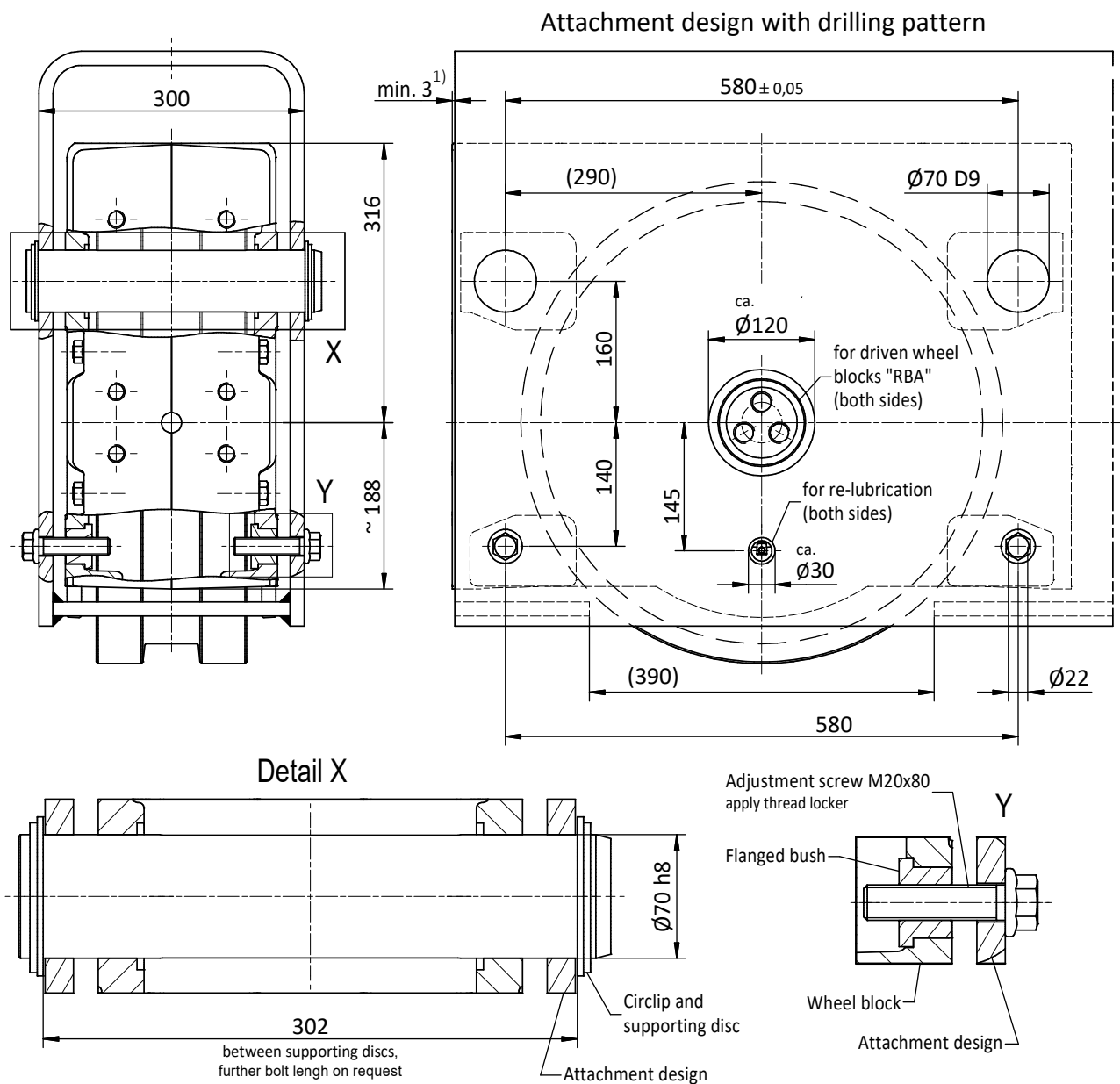
Adjustable pin attachment for installation in hollow profiles, floating levers, etc.

Pin connection with alignment possibility by adjustable grub screws. The alignment is done in assembled and relieved mode.

1 Set BA 500.2 comprising of:

- 2 Bolts Ø70
- 4 Circlipse 70×4, DIN 471
- 4 Supporting discs S 70×90 DIN 988
- 4 Flange bushings with internal thread (bonded)
- 4 Locking screws M20×80 (to be fixed with screw locking adhesive)
screw locking adhesive is **not** included in the scope of delivery

Pin connections are available in special design according to the customer drawing.



1) Dimension must be observed only with front mounting parts

Wheel block RB 500

Connection options

Pin attachment BA 500.3

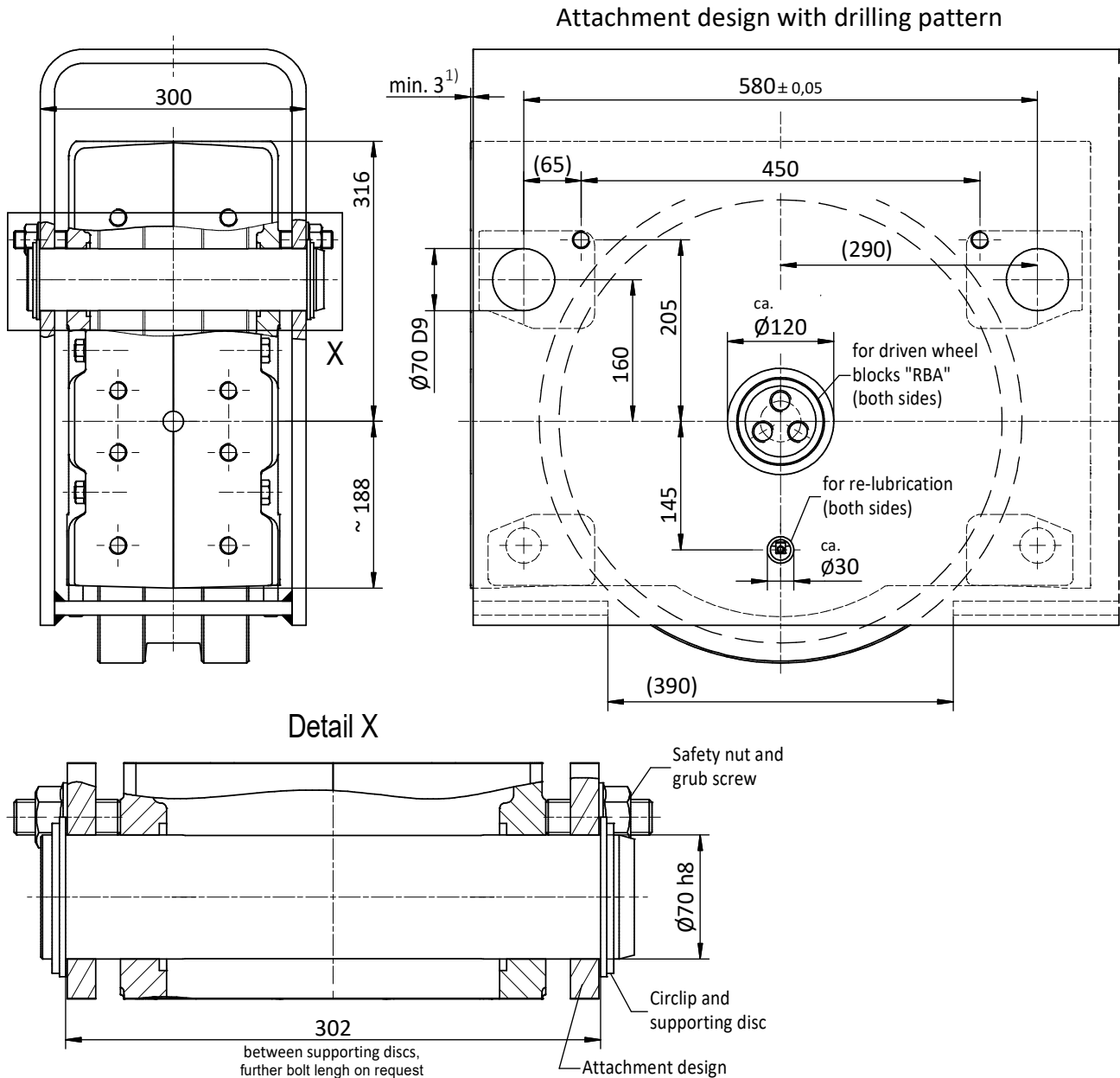
Adjustable pin attachment for installation in hollow profiles, floating levers, etc.

Pin connection with alignment possibility by adjustable grub screws. The alignment is done in assembled and relieved mode.

1 Set BA 500.3 comprising of:

- 2 Bolts $\text{Ø}70$
- 4 Circlipse 70×4 , DIN 471
- 4 Supporting discs S 70×90 DIN 988
- 4 Threaded pins M 20×60 DIN 913
- 4 Safety nuts M20

Pin connections are available in special design according to the customer



Wheel block RB 500

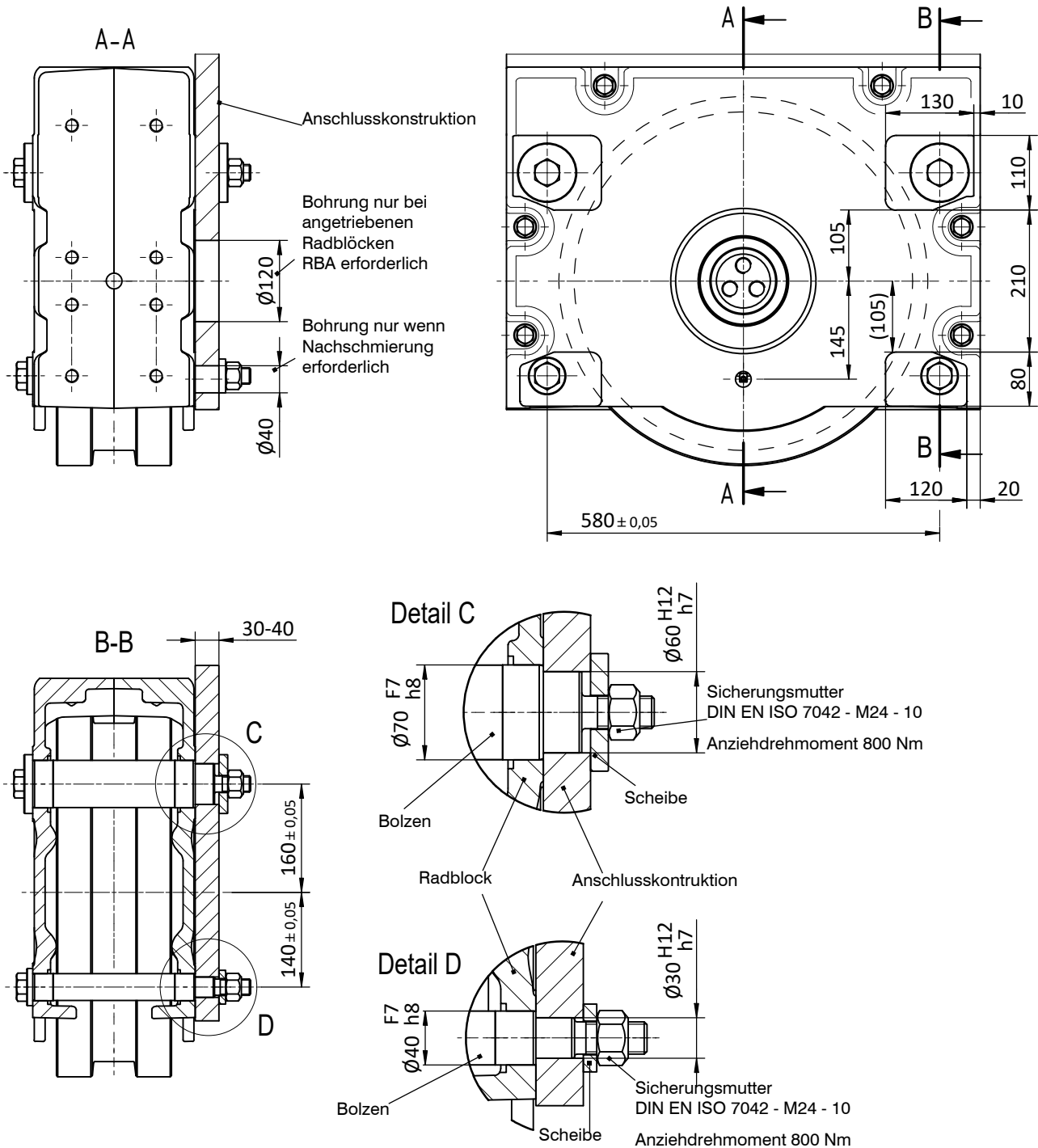
Connection options

Side connection WA 500

Lateral connection option for low construction designs

1 Set WA 500 comprising of:

- 2 Bolts $\text{Ø } 70/60$
- 2 Discs $\text{Ø } 25/87$
- 2 Bolts $\text{Ø } 40/30$
- 2 Discs $\text{Ø } 25 \text{ DIN } 7349$
- 4 Safety nuts M 24 DIN EN ISO 7042

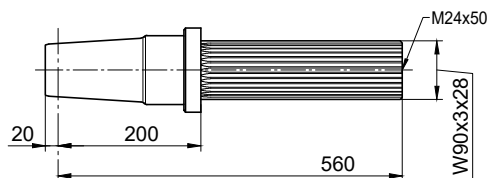
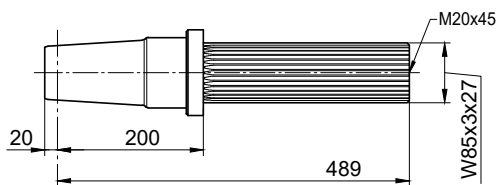
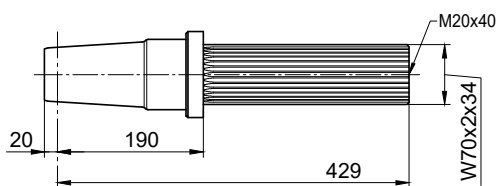
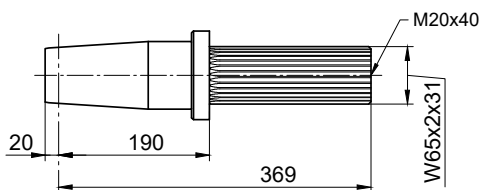


Wheel block RB 500

Drive shafts suitable for slip-on gear mechanisms from other manufacturers on request.

Single drive unit

Drive shaft suitable for slip-on gear mechanism with splined-shaft profile in accordance with DIN 5480



| Slip-on gear mechanism | | |
|------------------------|--------------|---|
| Model | Manufacturer | Splined-shaft profile in acc. with DIN 5480 |

| | | |
|------------------|-----------------|--------------|
| FV 87 / KV 87 | SEW | W65 x 2 x 31 |
| SPZT / SKZT 56.. | PREMIUM STEPHAN | |
| F.A.T / KAT 109 | SIEMENS | |

| | | |
|------------------|-----------------|--------------|
| FV 97 / KV 97 | SEW | W70 x 2 x 34 |
| SK 6282 EA | NORD | |
| SPZT / SKZT 66.. | PREMIUM STEPHAN | |
| F.A.T / KAT 129 | SIEMENS | |

| | | |
|------------------|-----------------|--------------|
| FV 107 / KV 107 | SEW | W85 x 3 x 27 |
| SK 7282 EA | NORD | |
| SPZT / SKZT 76.. | PREMIUM STEPHAN | |
| F.A.T / KAT 149 | SIEMENS | |

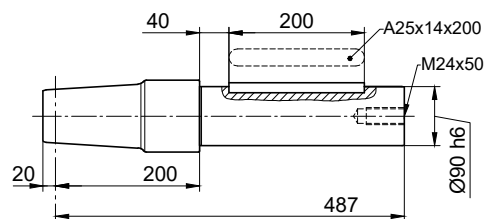
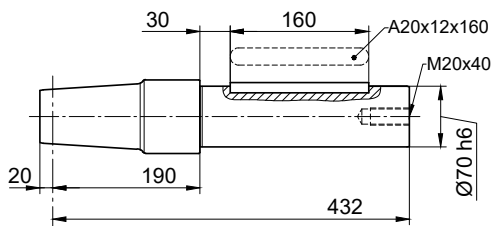
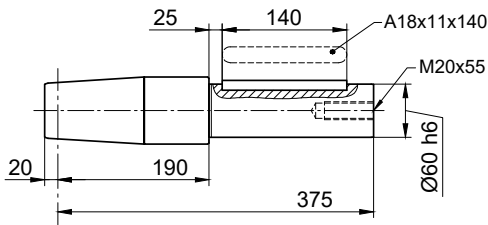
| | | |
|-----------------|---------|--------------|
| F.A.T / KAT 169 | SIEMENS | W90 x 3 x 28 |
|-----------------|---------|--------------|

Radblock RB 500

Drive shafts suitable for slip-on gear mechanisms from other manufacturers on request.

Single drive unit

Drive shaft suitable for slip-on gear mechanism with feather key connection in accordance with DIN 6885



| Slip-on gear mechanism | | |
|---|----------------------|-----------|
| Model | Manufacturer | Shaft end |
| FA / KA / SA 87 | SEW | Ø 60 |
| SK 5282 AB | NORD | |
| FDA 109 (FDA 108) FZA 109 (FZA 108) KA 109 (KA 108) | SIEMENS (FLENDER) | |
| GFL / GKS 09 | LENZE | |
| K 7 | STÖBER | |
| SPZH 56.. SKZH 56.. | PREMIUM STEPHAN | |

| | | |
|---|----------------------|------|
| FA / KA / SA 97 | SEW | Ø 70 |
| SK 6282 AB | NORD | |
| FDA 129 (FDA 128) FZA 129 (FZA 128) KA 129 (KA 128) | SIEMENS (FLENDER) | |
| SPZH 66.. SKZH 66.. | PREMIUM STEPHAN | |

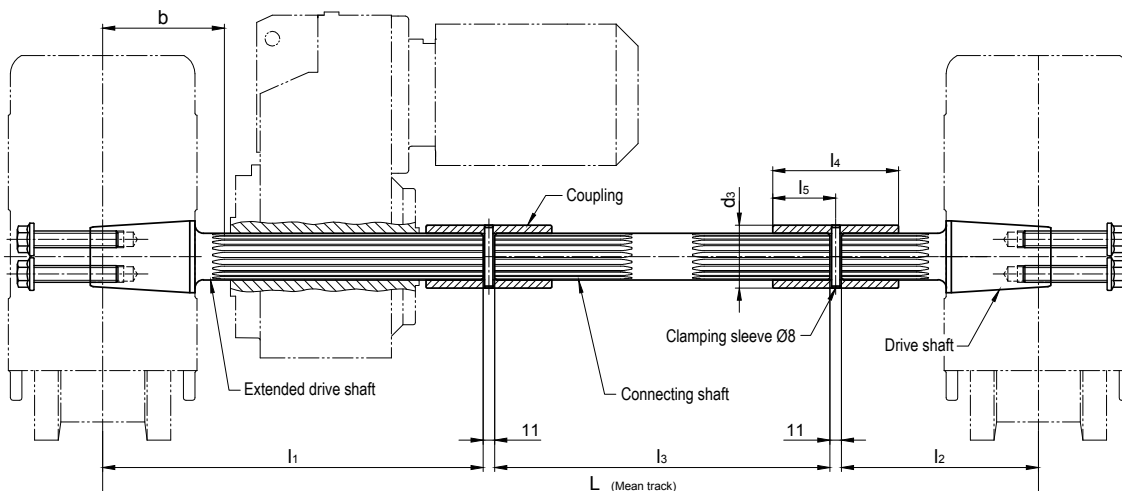
| | | |
|---|----------------------|------|
| FA / KA 107 | SEW | Ø 90 |
| FDA 149 (FDA 148) FZA 149 (FZA 148) KA 149 (KA 148) | SIEMENS (FLENDER) | |
| SPZH 77.. SKZH 77.. | PREMIUM STEPHAN | |

Wheel block RB 500

Drive shafts suitable for slip-on gear mechanisms from other manufacturers on request.

Central drive unit

Both wheel blocks are driven with only one gear motor
(Splined-shaft profile, feather key connection and shrink disc attachment)



| Model | Manufacturer | Splined-shaft-profile DIN 5480 | L | I1 | I2 | I3 | Centre RB to gearing b | I4 | I5 | d3 | Clamping sleeve DIN 1481 |
|----------------------------|----------------------|-----------------------------------|------------------------------|-----|----------------|----------------------------------|---------------------------------|-----|------|---------|--------------------------------|
| AF 10 AUK 60 | DEMAG | W65 x 2 x 31 | For ordering, please provide | 510 | 218 | Dimensi- on L minus 750 | 185 | 125 | 62,5 | 80 | 8 x 80 |
| FV 87 KV 87 | SEW | | | | | | | | | | |
| SK 9042.1AZE | NORD | | | | | | | | | | |
| SPZT 56.. SKZT 56.. | PREMIUM STEPHAN | | | | | | | | | | |
| F.AT 109 KAT 109 | SIEMENS | | | | | | | | | | |
| FV 97 KV 97 | SEW | W70 x 2 x 34 | | 580 | 218 | Dimensi- on L minus 820 | 185 | 135 | 67,5 | 90 | 8 x 90 |
| SK 6282EA SK 9052.1AZE | NORD | | | | | | | | | | |
| F.A.T 108B K.A.T 108 | SIEMENS (FLENDER) | | | | | | | | | | |
| SPZT 66.. SKZT 66.. | PREMIUM STEPHAN | | | | | | | | | | |
| F.AT 129 KAT 129 | SIEMENS | | | | | | | | | | |
| FV 107 KV 107 | SEW | W85 x 3 x 27 | | 650 | 228 | Dimensi- on L minus 900 | 195 | 160 | 80 | 110 | 8 x 110 |
| SK 7282 EA SK 9072.1AZE | NORD | | | | | | | | | | |
| F.AT 108B K.A.T 108 | SIEMENS | | | | | | | | | | |
| SPZT 77.. SKZT 77.. | PRMIUM STEPHAN | | | | | | | | | | |
| F.AT 149 KAT149 | SIEMENS | | | | | | | | | | |
| F.AT 169 KAT 169 | SIEMENS | W90 x 3 x 28 | 710 | 238 | L minus 970 | 200 | 170 | 85 | 115 | 8 x 115 | |

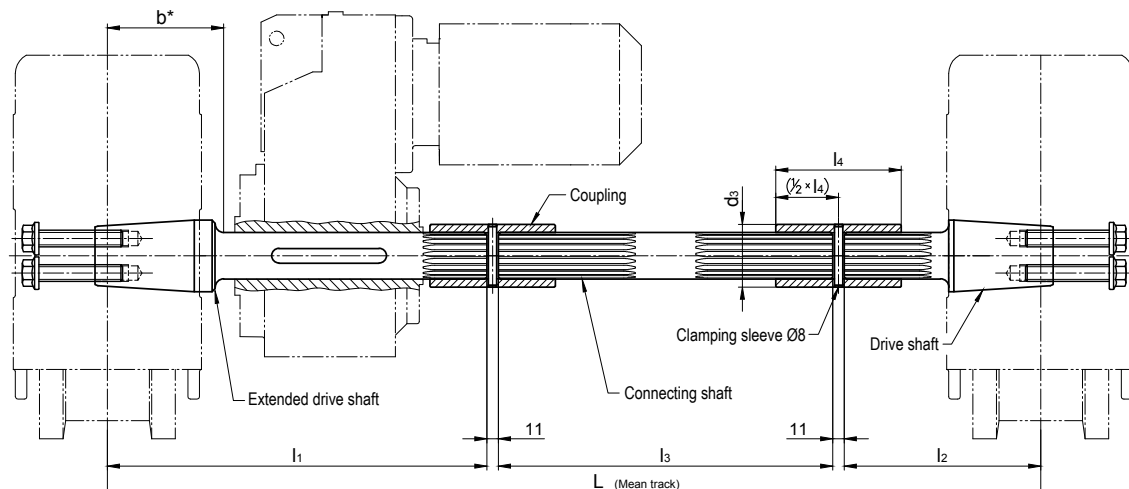
Wheel block RB 500

Drive shafts suitable for slip-on gear mechanisms from other manufacturers on request.

Central drive unit

Both wheel blocks are driven with only one gear motor

(Splined-shaft profile, feather key connection and shrink disc attachment)



For gearboxes with hollow shaft and feather key connection in acc. with DIN 6885

| Suitable for gearboxes with hollow shaft | | L | l1 | l2 | l3 | b* without gearbox stop | Feather key DIN 6885 | Coupling Internal gearing/ d3 x l4 |
|--|--|------------------------------|-----|-----|--------------------------|----------------------------|-------------------------|--|
| Inner-Ø | Length | | | | | | | |
| Ø 60 | ≤ 280 ¹⁾ ≤ 250 ²⁾ | For ordering, please provide | 500 | 213 | Dimension L minus 735 | 160 | A 18 x 11 x 140 | N60 x 2 x 28 Ø 75 x 125 |
| Ø 70 | ≤ 350 ¹⁾ ≤ 320 ²⁾ | | 600 | 218 | Dimension L minus 840 | 160 | A 20 x 12 x 180 | N70 x 2 x 34 Ø 90 x 135 |
| Ø 80 | ≤ 380 ¹⁾ ≤ 350 ²⁾ | | 625 | 228 | Dimension L minus 875 | 160 | A 22 x 14 x 180 | N75 x 3 x 24 Ø 95 x 145 |
| Ø 90 | ≤ 410 ¹⁾ ≤ 380 ²⁾ | | 650 | 238 | Dimension L minus 910 | 170 | A 25x 14 x 200 | N90 x 3 x 28 Ø 115 x 170 |

* Drive shafts without gearbox stop !

Dimension b = Smallest possible distance from the centre of the wheel block to the hollow drive shaft

¹⁾ at smallest possible distance of the gearbox (b)

²⁾ at distance of the gearbox = 190 mm

Drive shafts with gearbox stop on request.

Suitable for gearboxes of the following manufacturers:

Siemens Motox (Flender), Bauer (Danfoss), KEB, Lenze, Nord, PREMIUM STEPHAN, SEW, Siemens, Stöber, Demag

Et.al. suitable type designations, refer to the single drive unit.