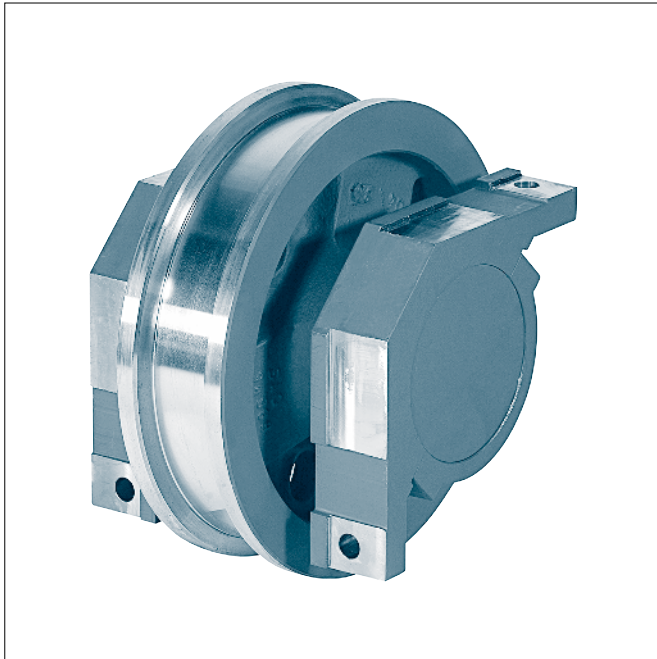


## Wheel sets with corner support (driven and nondriven)

TGL 34968



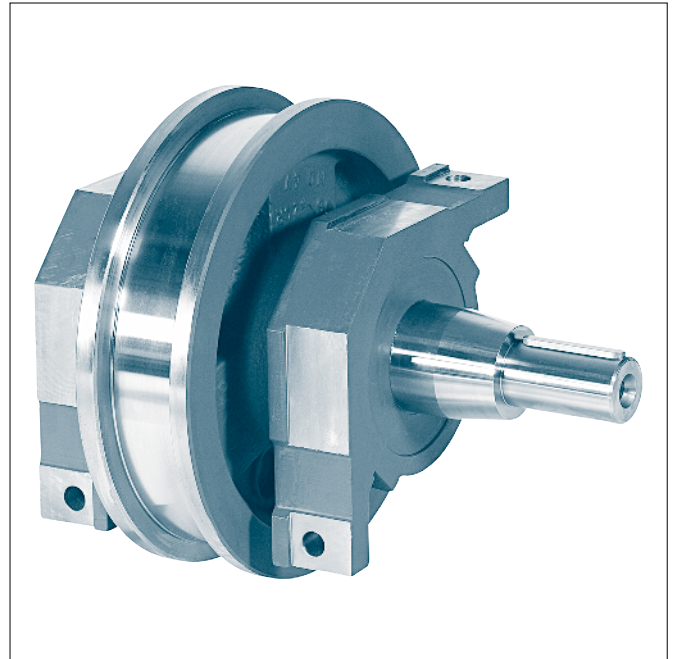
**Form A1** Crane wheel with idle shaft  
(nondriven wheel set)

Designation of a crane wheel form A1 (nondriven wheel set) with corner support, nominal- $\varnothing d_1 = 400$  mm, gauge  $b_2 = 80$  mm, incl. self aligning roller bearings 22220:

**Crane wheel A1 - 400 × 80 TGL 34968**

Designation of a crane wheel form B3 (driven wheel set) without corner support, nominal- $\varnothing d_1 = 400$  mm, gauge  $b_2 = 100$  mm, shaft- $\varnothing d_5 = 70$  mm, Wellenmaß  $e_6 = 635$  mm, incl. self aligning roller bearings 22220:

**Crane wheel B3 - 400 × 100 - 70 × 635 TGL 34968**



**Form A3** Crane wheel with drive shaft (driven wheel set)

**Type with shaft ends suitable for hollow shaft drive units of all manufacturers on request.**

<b>Form A</b>	crane wheels with corner support
<b>Form B</b>	crane wheels without corner support and covers
<b>Form A1, B1</b>	nondriven wheel set with idle shaft
<b>Form A2, B2</b>	driven wheel set with drive shaft for coupling
<b>Form A3, B3</b>	driven wheel set with drive shaft for hollow shaft gear unit
<b>Form A4, B4</b>	driven wheel set with drive shaft for coupling and hollow shaft gear unit
<b>Form A5, B5</b>	driven wheel set with drive shaft for hollow shaft gear unit

The anti friction bearings are lubricated. Re-lubrication by using the lubrication nipple in the corner support or in the outer covers.

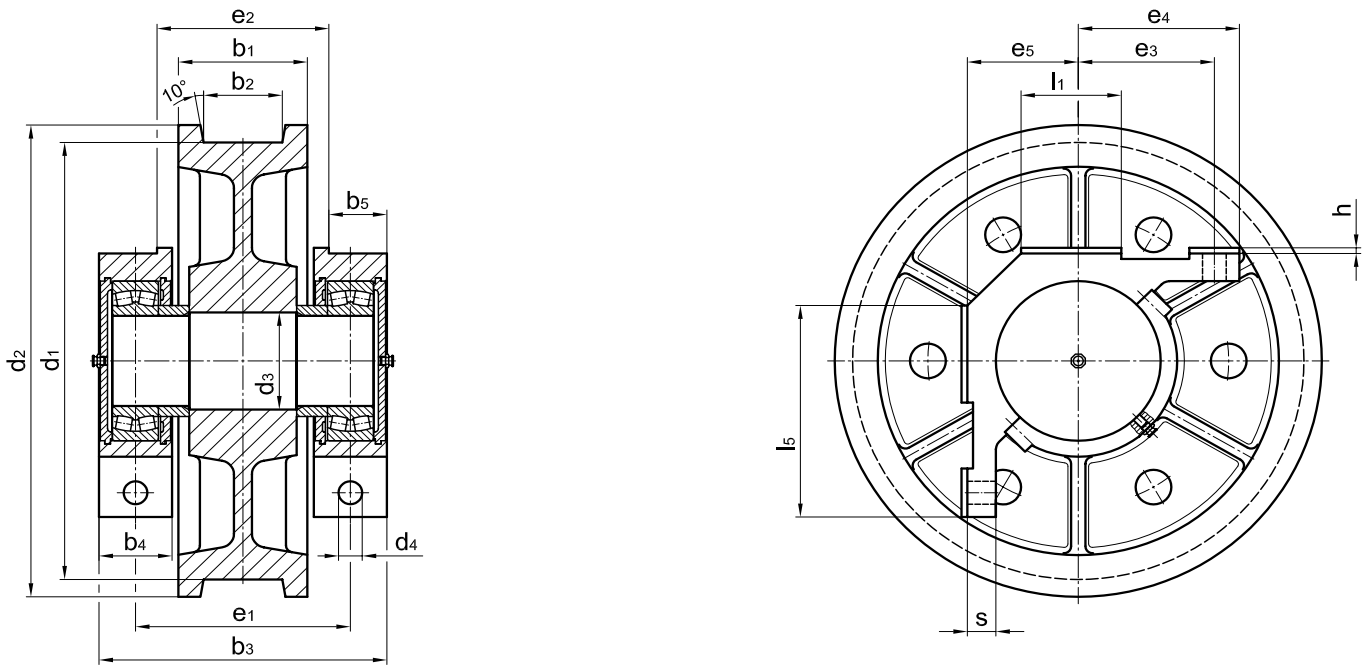
Material:

Wheel body	GE420 (GS-70) or G42CrMo4+QT (GS-42CrMo4 V)
drive shaft	42CrMo4QT
shaft	C45
corner support	S355J2 G3 (St 52-3)

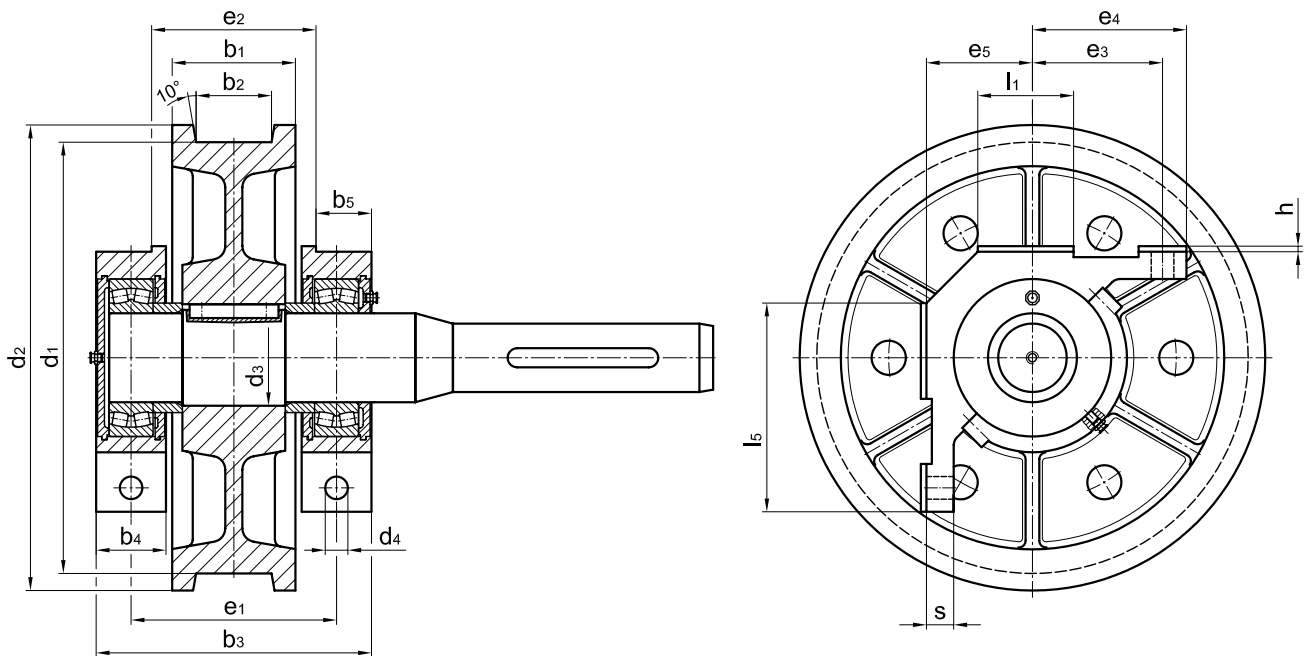
**Other material and dimensions on request.**

# Wheel sets with corner support (driven and nondriven)

TGL 34968



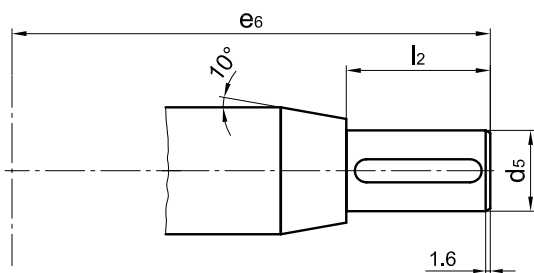
**Form A1** crane wheel with shaft (nondriven wheel set)



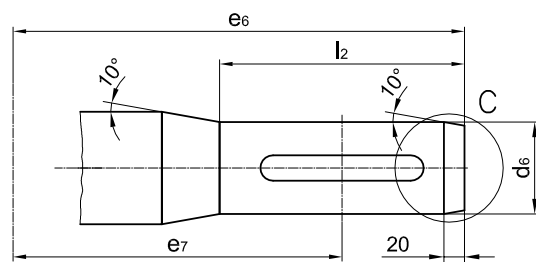
**Form A3** crane wheel with drive shaft (driven wheel set)

# Wheel sets with corner support (driven and nondriven)

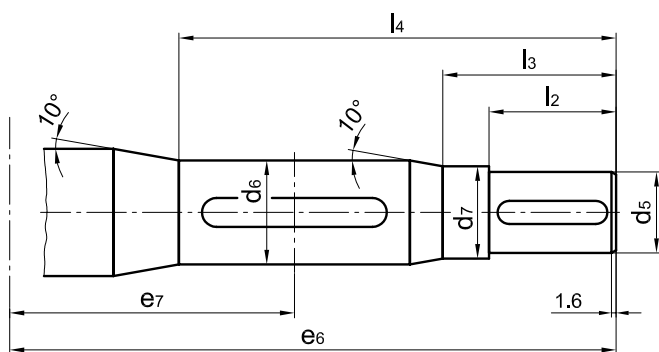
TGL 34968



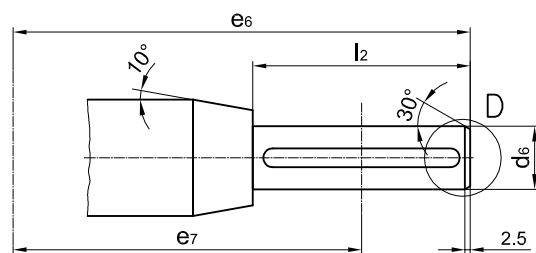
**Form A2, B2** for coupling



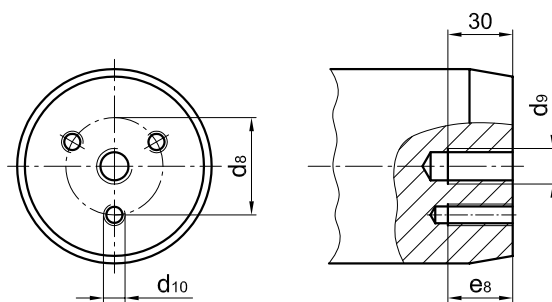
**Form A3, B3** for hollow shaft gear unit



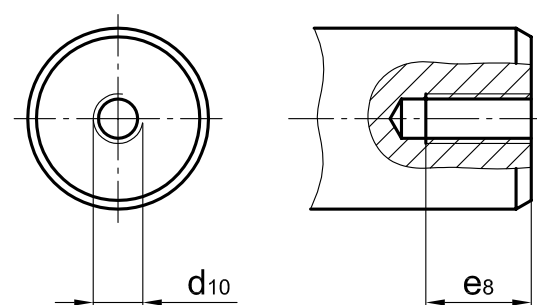
**Form A4, B4** for coupling and hollow shaft gear unit



**Form A5, B5** for hollow shaft gear unit



**view C**



**view D**

# Wheel sets with corner support (driven and nondriven)

**TGL 34968**

**Dimensions**

nominal-Ø d <sub>1</sub>	form	b <sub>2</sub>	b <sub>1</sub>	b <sub>3</sub>	b <sub>4</sub>	b <sub>5</sub>	d <sub>2</sub>	d <sub>3</sub>	d <sub>4</sub>	e <sub>1</sub>	e <sub>2</sub>	e <sub>3</sub>	e <sub>4</sub>	e <sub>5</sub>	h	l <sub>1</sub>	l <sub>5</sub>	s	bea- rings	
h9								m6			toler- ance			-0,15						
<b>320</b>	all	40-70	100	<b>Dimensions on request</b>																
		80-90	130																	
<b>400</b>	all	50-80	120																	
		90-120	160																	
<b>500</b>	all	50-80	120																	
		90-120	160																	
<b>630</b>	all	60-90	140																	
		100-130	180																	
<b>710</b>	all	60-80	140																	
		90-130	180																	
<b>800</b>	all	80-90	160																	
		100-130	200																	
<b>900</b>	all	90-110	190																	
		120-150	210																	

# Wheel sets with corner support (driven and nondriven)

TGL 34968

## Dimensions of drive shaft ends

nominal- $\varnothing$ $d_1$	form	$d_5$ m6	$d_6$ g6	$d_7$ -0,1	$d_8$	$d_9$	$d_{10}$	$e_6$	$e_7$	$e_8$	$l_2$	$l_3$	$l_4$	key
<b>320</b>	A2, B2	45	-	-										
		60												
		70												
	A3, B3	-	55	-										
			70											
	A4, B4	60	70	65										
A5, B5	-		40	-										
			50											
			60											
<b>400</b>	A2, B2	50	-	-										
		60												
		70												
	A3, B3	-	55	-										
			70											
	A4, B4	60	70	65										
70		90	80											
A5, B5	-		40	-										
			50											
			60											
<b>500</b>	A2, B2	60	-	-										
		70												
		80												
	A3, B3	-	70	-										
			90											
	A4, B4	70	90	80										
80		100	90											
A5, B5	-		50	-										
			60											

Dimensions on request

# Wheel sets with corner support (driven and nondriven)

TGL 34968

**dimensions of drive shaft ends** (continuance)

nominal-Ø d <sub>1</sub>	Form	d <sub>5</sub> m6	d <sub>6</sub> g6	d <sub>7</sub> -0,1	d <sub>8</sub>	d <sub>9</sub>	d <sub>10</sub>	e <sub>6</sub>	e <sub>7</sub>	e <sub>8</sub>	l <sub>2</sub>	l <sub>3</sub>	l <sub>4</sub>	key	
<b>630</b>	A2, B2	60	-	-											
		70													
		80													
	A3, B3	-	70	-											
			90												
			100												
	A4, B4	-	70	90											80
			80	100											90
	A5, B5	-	50	-											
			60												
<b>710</b>	A2, B2	70	-	-											
		80													
		90													
	A3, B3	-	90	-											
100															
<b>800</b>	A2, B2	110	-	-											
	A3, B3	-	90	-											
			100												
<b>900</b>	A2, B2	100	-	-											
		110													
		130													

**Dimensions on request**